
Choose your Update:

When either installing or updating your software, we offer several versions to choose from. The update process is the same if you have PartnerPak Studio or Glazier Studio.

Updates Available:

Full Installation – Use this when you want to install the software on a computer that doesn't already have the software installed.

Option 1 Update – Use this version if you want to upgrade the software to the latest version and don't have any projects or data that you want to save. All databases will be replaced with clean versions.

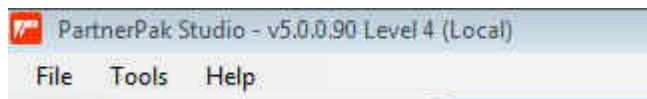
Option 2 Update – Use this version to merge changes with the existing program. No projects or custom data will be lost using this process. This is the recommended update.

Option 3 Update – Use this version to upgrade older versions of the program to the latest version. This merges changes with the program so no projects or custom data are lost. Some reports are lost during this update so it is not recommended for persons using the RhinoFAB Fabrication Center.

You need to know the following:

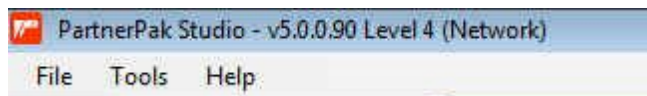
1. What version are you currently running?

To find out start the program, then look at the top bar near the program name, and it will say 5.0.0.xx (xx being the version of the software currently installed.)



If you show LOCAL – your databases are located on your computer only and updating will only affect you.

Or



If you show NETWORK – your databases are located on a server computer and updating will affect everyone running this software on the network. Once you update, only those users who have updated with you can access the software.

2. What version is the current version?

When you go to the website, what version does it show under option 2? i.e 5.0.0.86



Per the image: The option 2 update will work if you have version 5.0.0.88 or newer.

If your version is older than the one that the option 2 states it will upgrade. (See Upgrade Version above to determine what Version(s) it will update)

3. Do you have projects, settings or data that you want to save?

If the answer is no – Run Option 1 to get updated.

If the answer is yes – Run Option 3 to get updated (unless you own a RhinoFAB)

4. Do you own or use a RHINOFAB Fabrication Center?

If the answer is no – Run Option 3 to get updated.

If the answer is yes – Run each Option 2 update from the Previous Updates to get updated.