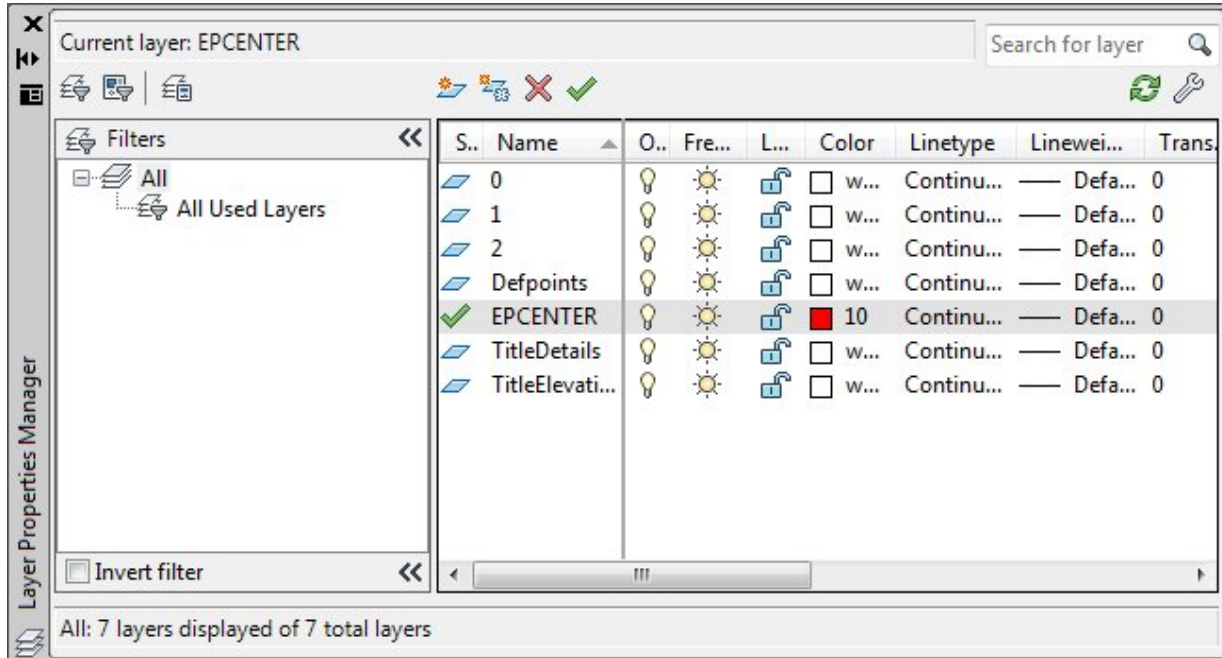


Importing DXF files into PartnerPak Studio

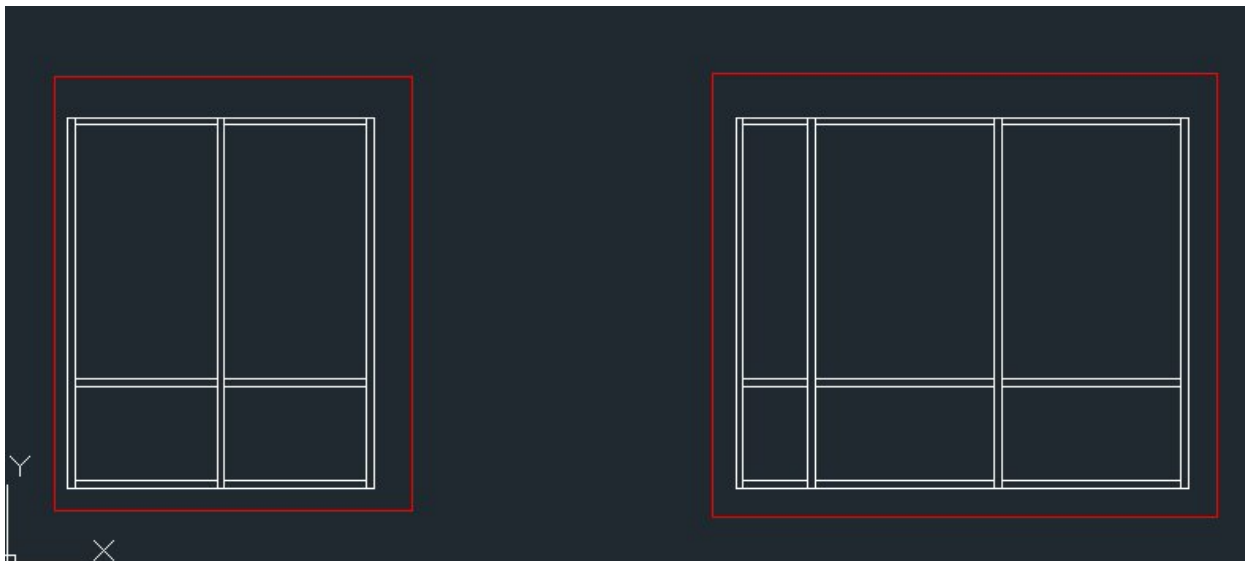
Objective(s): Import elevations from CAD drawings.

1. Open CAD file with CAD program.
2. Create a layer named **EPCENTER** and set as current layer.



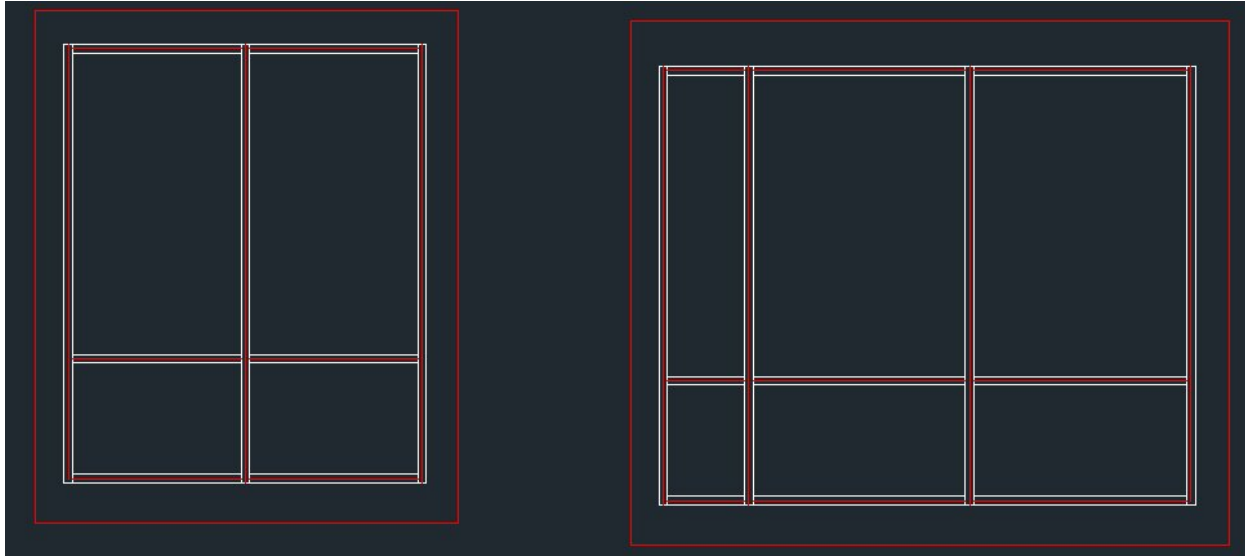
3. Use the draw rectangle box tool or command and draw boxes around each elevation to be imported.

Note: Do not overlap boxes between elevations or touch the elevations to be imported.



- Use the draw LINE tool or command to draw vertical and horizontal centerlines of each stick of the elevation.

Note: Do not use the Polyline tool or command.

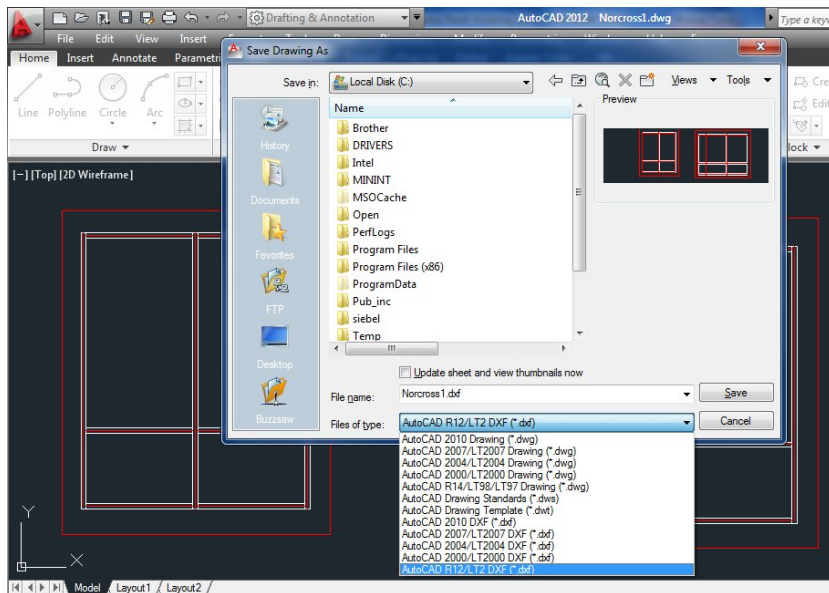


- You can add centerlines to door frames, but leave the door stiles and rails empty.

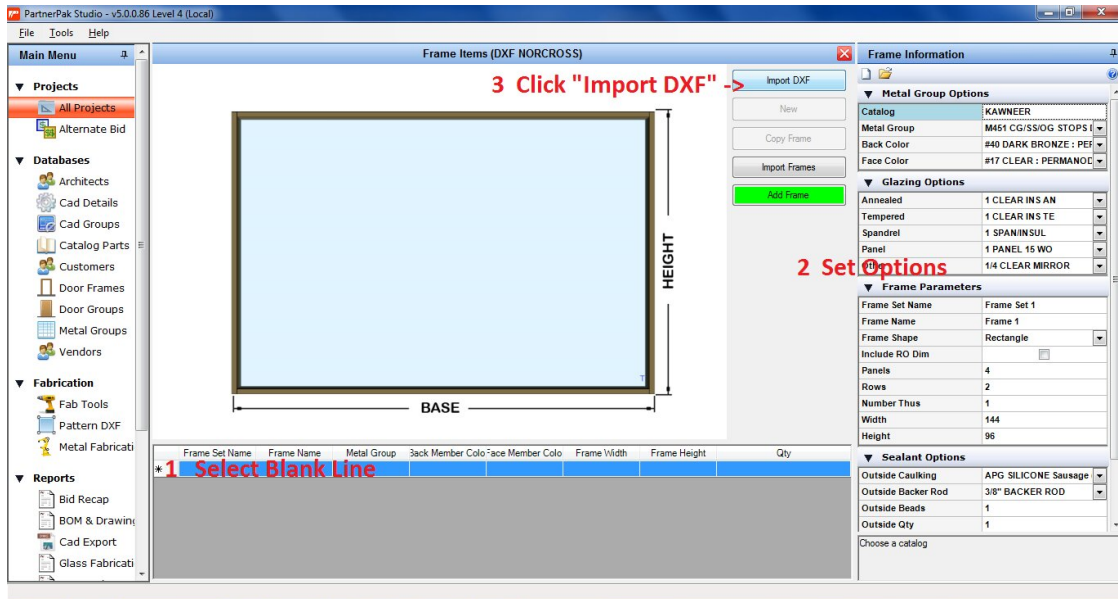
(You will have to manually place the door in Studio)

- Save the drawing as the lowest possible release of **DXF**.

(Recommended: AutoCAD R12 DXF)



7. Open PartnerPak Studio. Open an existing project or start a new project to import the DXF frames into.
8. Select a new line in the project for the frame to be added to.
9. Setup all your options for the frames that you are about to import
 Select desired **Metal Group**, **Glazing**, and **Sealant** options in **Frame Information** on right side.



10. Click **Import DXF** button and select DXF file.
11. Each frame in the DXF file will be created.

