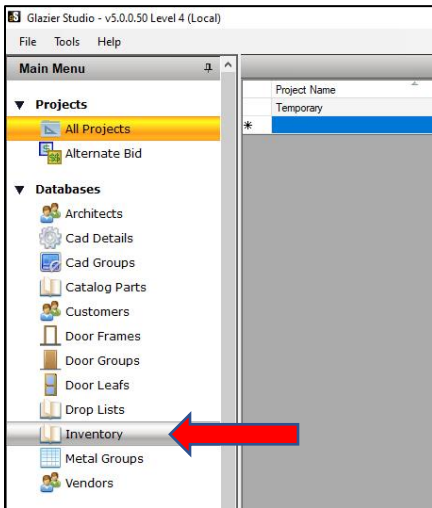


Glazier Studio 5.0.0.50 Update Release Notes

1. Created an inventory management screen for extrusions and hardware. The inventory is setup manually and during any metal optimization a question will be asked to allocate inventory for that project



Name	Finish	Length	Qty On Hand	Qty On Order	Location	Unit Cost	Date	Project Name
450CG001	#17CLEAR - PERMANODIC	288	3	0	ALLOCATED	0	1/3/2020	Temporary
450CG001	#17CLEAR - PERMANODIC	288	3	0	ALLOCATED	0	1/3/2020	Temporary
450CG002	#17CLEAR - PERMANODIC	288	0	0	ALLOCATED	0	1/3/2020	Temporary
450CG002	#17CLEAR - PERMANODIC	288	1	0	ALLOCATED	0	1/3/2020	Temporary

Select part, finish, length, and qty on hand to get started. All other information can be entered but not required. The project name will be filled out automatically if material is allocated during any of the metal optimizations. Only extrusions are allocated at this time. The length needs to be the standard stock size of the part plus the add to stock in your settings. Items that have a 0 or negative qty on hand will be highlighted in red. You can print a report that is based on what you have shown on the inventory screen at the time you select print.

2. Added a sub total and grand total box to each tab of the recap review screens

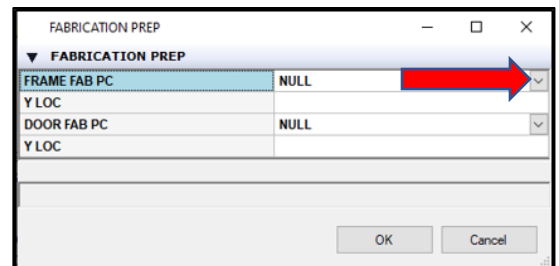
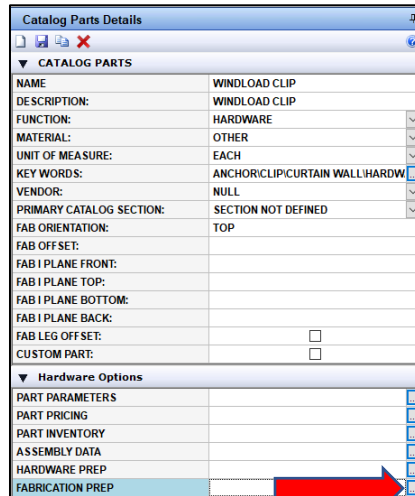
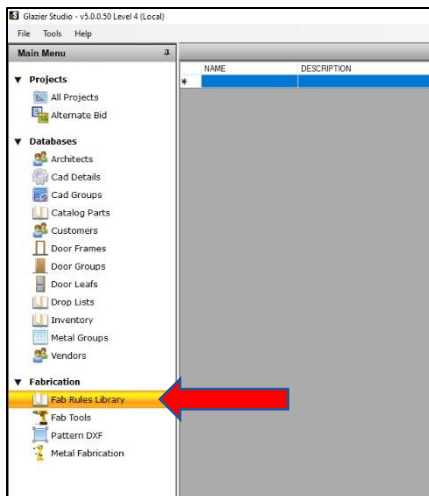
Vendor	Product Code	Description	Finish	UOM	Stock Size	Quantity	Price Per Unit	CMP	Total	Changed
KAWNEER COMPANY INC.	450037	TRIFAB II 450/451 SILL FLASHING	#17 CLEAR : PERMANODIC	LENGTH	288	1	\$116.00	1.000	\$116.00	
KAWNEER COMPANY INC.	450CG001	TRIFAB VG 450 JAMB/MULLION/HEAD/SILL W/SPLINES	#17 CLEAR : PERMANODIC	LENGTH	288	3	\$200.00	1.000	\$600.00	
KAWNEER COMPANY INC.	450CG002	TRIFAB VG 450 INSERT FILLER SHALLOW POCKET 1/4"	#17 CLEAR : PERMANODIC	LENGTH	288	1	\$92.00	1.000	\$92.00	
KAWNEER COMPANY INC.	450CG003	TRIFAB VG 450 HEAD/HORIZONTAL/SILL	#17 CLEAR : PERMANODIC	LENGTH	288	1	\$171.00	1.000	\$171.00	
KAWNEER COMPANY INC.	450CG004	TRIFAB VG 450 HORIZONTAL STOP	#17 CLEAR : PERMANODIC	LENGTH	288	1	\$60.00	1.000	\$60.00	
KAWNEER COMPANY INC.	450CG011	TRIFAB VG 450 HORIZONTAL MULLION	#17 CLEAR : PERMANODIC	LENGTH	288	1	\$225.00	1.000	\$225.00	

Sub Total: \$1264.00 Grand Total: \$1865.61

3. Added the description to the product code drop downs for Metal Fabrication, Recap Reviews, PO Review, & Misc. Metal and Glass Optimization screens

Name	Description
450CG001	TRIFAB VG 450 JAMB/MULLION/HEAD/SILL W/
450CG002	TRIFAB VG 450 INSERT FILLER SHALLOW POCH
450-CG-002	TRIFAB VG 450 INSERT FILLER SHALLOW POCH
450CG003	TRIFAB VG 450 HEAD/HORIZONTAL/SILL
450CG004	TRIFAB VG 450 HORIZONTAL STOP
450-CG-004	TRIFAB VG 450 HORIZONTAL STOP
450CG005	TRIFAB VG 450 VERTICAL MULLION
450CG007	TRIFAB VG 450 HEAD/SILL INSERT
450CG008	TRIFAB VG 450 SILL/HEAD INSERT
450CG010	TRIFAB VG 450 FEMALE EXPANSION MULLION
450CG011	TRIFAB VG 450 HORIZONTAL MULLION
450CG013	TRIFAB VG 450 HEAVY HEAD OR JAMB MULLIO
450CG014	TRIFAB VG 450 CFNTER GLAZE SILL

4. When adding an anchor to an elevation the anchor product code can recall a library fab and apply to that fabrication to the stick



The first step is to create a library fab in the database and then go to your anchor parts in the **Catalog Parts** database and select **Fabrication Prep** under options. Then select your library fab part in the **Frame Fab PC** drop down. Door Fab PC is not used at this time.

Once the fabrication information is setup and anchors are added to an elevation in the graphics design screen, that fabrication will be applied when the **Metal Fabrication** function is processed for that elevation.

5. Added an option in the metal group to set the length of the door jamb companion to extend to the finished floor or bottom of sill member

The screenshot shows the 'METAL GROUP DESIGN' window with the 'Fabrication Options' section expanded. The 'EXTEND DR COMP JAMB TO FLOOR' checkbox is highlighted with a red arrow. Other options include 'DON'T CUT SILL CHANNEL AT DOOR' (unchecked), 'FACE MEMBER DESIGN STYLE' (set to 'VERTICALS PENETRATE TOP AND BOT'), and various expansion and channel settings.

To set this option select your metal group in the **Metal Groups** database. Selecting the check box will run the door jamb companion piece to the finished floor and be the same length as the door jamb member. If left un-checked then the door jamb companion piece will stop at the bottom of the sill member adjacent and **NOT** to the bottom of the sill channel or finished floor.

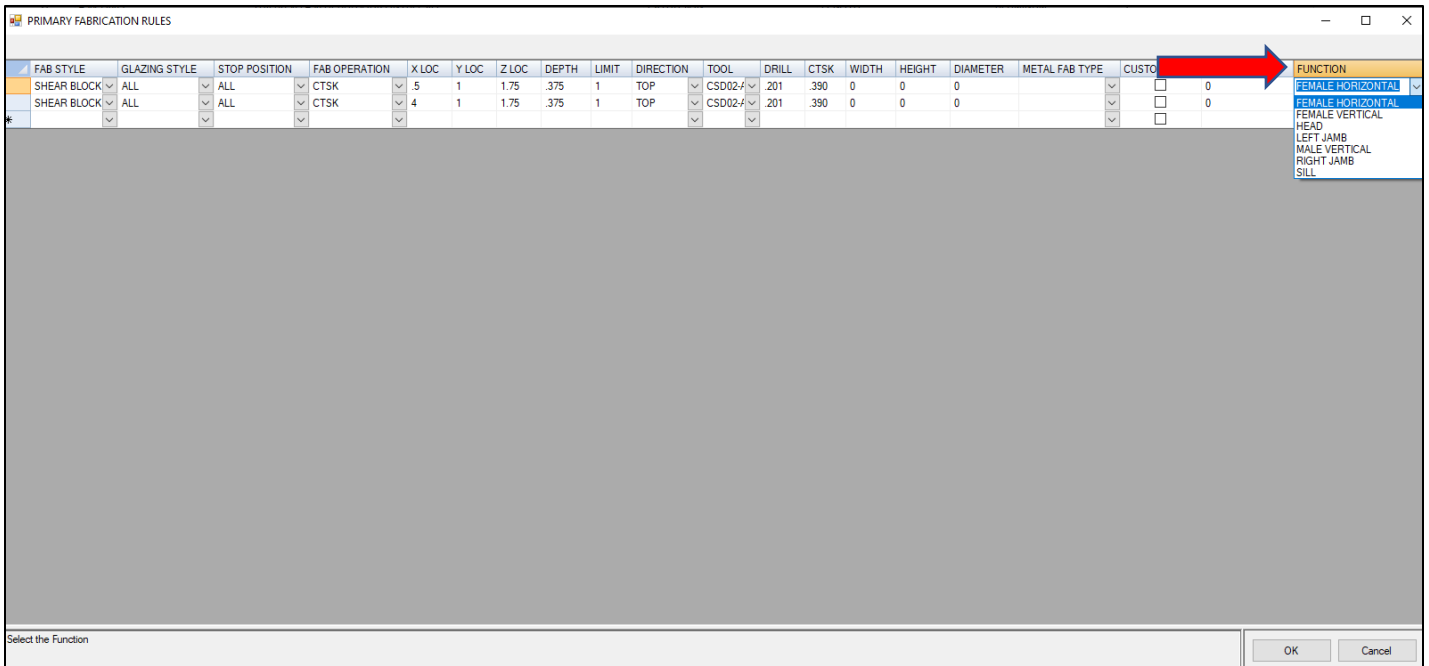
6. The end extension field for face members can now be used in the metal group. Prior to this only the undercut field with a + or - was operational

FACE AND PP GAPS		
NAME	UNDERCUT	END EXTEND
LEFT JAMB FACE	0	0
VERTICAL FACE	0	0
HEAD FACE	0.0625	0
SILL FACE	0.0625	0
HORIZONTAL FACE	0.0625	0
LEFT JAMB PRESSURE PLATE	0	0
VERTICAL PRESSURE PLATE	0	0
HEAD PRESSURE PLATE	0.75	0
SILL PRESSURE PLATE	0.75	0
HORIZONTAL PRESSURE PLATE	0.75	0
RIGHT JAMB FACE	0	0
RIGHT JAMB PRESSURE PLATE	0	0
EXPAN MULL FACE	0	0
EXPAN MULL PRESSURE PLATE	0	0
JAMB FACE @ EXPAN HORIZ	0	0
VERT MULL FACE @ EXPAN HORIZ	0	0
JAMB P/P @ EXPAN HORIZ	0	0
VERT MULL P/P @ EXPAN HORIZ	0	0

Enter Total Amount of Undercut For Member
NOTE: PRESSURE PLATE GAP IS FROM FACE GAP

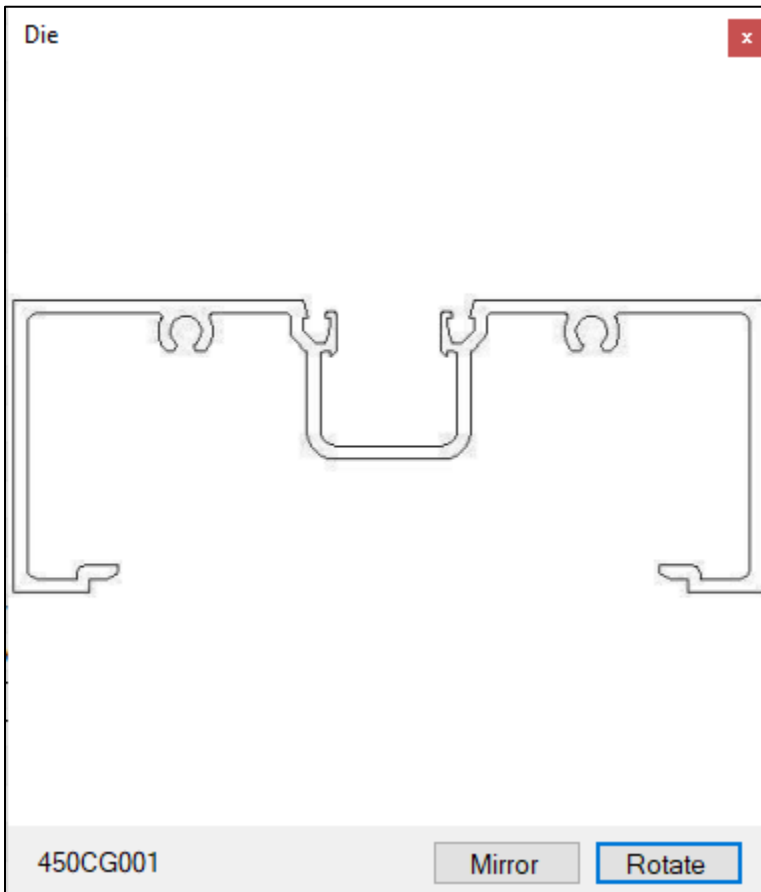
This setting is found in the **Metal Group** database for each metal system.

7. Primary fabrications can now be setup per a function type or to be used anywhere



This setting is in the **Primary Fabrication Rules** of the **Catalog Parts** section database. It will allow you to specify certain fabrication rules to only be applied to the parts when they are used as the function selected.

8. The F5 key can be used on a part to mirror or rotate the part image if not in the correct orientation to be processed through a RhinoFab machine.



To access this screen hit the **F5** key when selected on a part number in certain areas of the program. All part images should be oriented as they would lay to be processed through fabrication machinery such as our RhinoFab equipment.

9. Split stick option in metal fabrication can now be applied to multiple sticks at once

Fabrications Machine Orientation: LEFT

Saved Fabrications:

Grid Color Code:

Part ID	Product Code	Finish	Length	Quantity	Start Point	Add Operation	Leading Angle Type	Leading Angle	Trailing Angle Type	Trailing Angle	PC Width	PC Depth	Fab	Fal	Fi	Fj	Job Name	Frameset Name	Frame Name	Function
15C	450037	#17 CLEAR - PERMAI	144.25	1	RIGHT		NONE	0	NONE	0	1.6875	4.75	0	0	0	0	Temporary	Frame Set 1	Frame 1	SILL RECEPTORS CHANNEL
1	450CG001	#17 CLEAR - PERMAI	95.875	1	BOTTOM		NONE	0	NONE	0	1.75	4.5	0	0	0	0	Temporary	Frame Set 1	Frame 1	VERTICAL LEFT JAMB
3	450CG001	#17 CLEAR - PERMAI	95.875	3	BOTTOM		NONE	0	NONE	0	1.75	4.5	0	0	0	0	Temporary	Frame Set 1	Frame 1	VERTICAL FEMALE VERTICAL
4	450CG001	#17 CLEAR - PERMAI	95.875	1	TOP		NONE	0	NONE	0	1.75	4.5	0	0	0	0	Temporary	Frame Set 1	Frame 1	VERTICAL RIGHT JAMB
7	450CG001	#17 CLEAR - PERMAI	33.8125	1	LEFT		NONE	0	NONE	0	1.75	4.5	0	0	0	0	Temporary	Frame Set 1	Frame 1	HORIZONTAL HEAD
10	450CG001	#17 CLEAR - PERMAI	33.8125	2	LEFT		NONE	0	NONE	0	1.75	4.5	0	0	0	0	Temporary	Frame Set 1	Frame 1	HORIZONTAL HEAD
13	450CG001	#17 CLEAR - PERMAI	33.8125	1	LEFT		NONE	0	NONE	0	1.75	4.5	0	0	0	0	Temporary	Frame Set 1	Frame 1	HORIZONTAL HEAD
2	450CG002	#17 CLEAR - PERMAI	95.875	3	BOTTOM		NONE	0	NONE	0	0	3.875	0	0	0	0	Temporary	Frame Set 1	Frame 1	VERTICAL MALE VERTICAL
5	450CG003	#17 CLEAR - PERMAI	33.8125	1	RIGHT		NONE	0	NONE	0	1.75	4.5	1218	25	0	0	Temporary	Frame Set 1	Frame 1	HORIZONTAL SILL
8	450CG003	#17 CLEAR - PERMAI	33.8125	2	RIGHT		NONE	0	NONE	0	1.75	4.5	1218	25	0	0	Temporary	Frame Set 1	Frame 1	HORIZONTAL SILL
11	450CG003	#17 CLEAR - PERMAI	33.8125	1	RIGHT		NONE	0	NONE	0	1.75	4.5	1218	25	0	0	Temporary	Frame Set 1	Frame 1	HORIZONTAL SILL
55T	450CG004	#17 CLEAR - PERMAI	33.75	1	RIGHT		NONE	0	NONE	0	0	0	0	0	0	0	Temporary	Frame Set 1	Frame 1	SILL OUTSIDE STOP STOP
85T	450CG004	#17 CLEAR - PERMAI	33.75	1	RIGHT		NONE	0	NONE	0	0	0	0	0	0	0	Temporary	Frame Set 1	Frame 1	SILL OUTSIDE STOP STOP
85T-17	450CG004	#17 CLEAR - PERMAI	33.75	1	RIGHT		NONE	0	NONE	0	0	0	0	0	0	0	Temporary	Frame Set 1	Frame 1	SILL OUTSIDE STOP STOP
115T	450CG004	#17 CLEAR - PERMAI	33.75	1	RIGHT		NONE	0	NONE	0	0	0	0	0	0	0	Temporary	Frame Set 1	Frame 1	SILL OUTSIDE STOP STOP
65T	450CG004	#17 CLEAR - PERMAI	33.75	1	RIGHT		NONE	0	NONE	0	0	0	0	0	0	0	Temporary	Frame Set 1	Frame 1	FEMALE HORIZONTAL OUTSIDE STOP
95T	450CG004	#17 CLEAR - PERMAI	33.75	1	RIGHT		NONE	0	NONE	0	0	0	0	0	0	0	Temporary	Frame Set 1	Frame 1	FEMALE HORIZONTAL OUTSIDE STOP
95T-21	450CG004	#17 CLEAR - PERMAI	33.75	1	RIGHT		NONE	0	NONE	0	0	0	0	0	0	0	Temporary	Frame Set 1	Frame 1	FEMALE HORIZONTAL OUTSIDE STOP
125T	450CG004	#17 CLEAR - PERMAI	33.75	1	RIGHT		NONE	0	NONE	0	0	0	0	0	0	0	Temporary	Frame Set 1	Frame 1	FEMALE HORIZONTAL OUTSIDE STOP
6	450CG011	#17 CLEAR - PERMAI	33.8125	1	RIGHT		NONE	0	NONE	0	1.75	4.5	1125	25	0	0	Temporary	Frame Set 1	Frame 1	HORIZONTAL FEMALE HORIZONTAL
9	450CG011	#17 CLEAR - PERMAI	33.8125	2	RIGHT		NONE	0	NONE	0	1.75	4.5	1125	25	0	0	Temporary	Frame Set 1	Frame 1	HORIZONTAL FEMALE HORIZONTAL
12	450CG011	#17 CLEAR - PERMAI	33.8125	1	RIGHT		NONE	0	NONE	0	1.75	4.5	1125	25	0	0	Temporary	Frame Set 1	Frame 1	HORIZONTAL FEMALE HORIZONTAL

10. Updated pricing and added new additional systems for several vendor databases