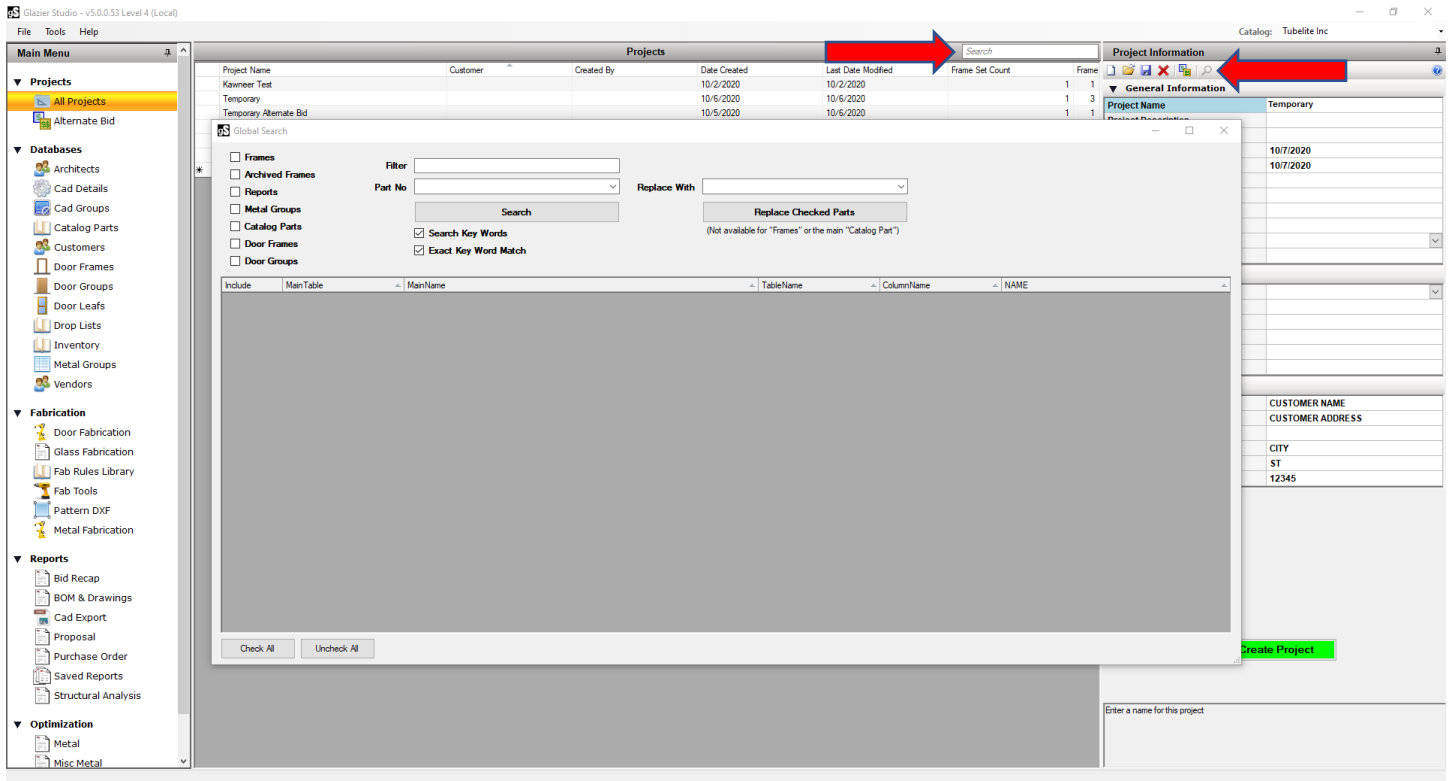


Glazier Studio 5.0.0.54 Update Release Notes

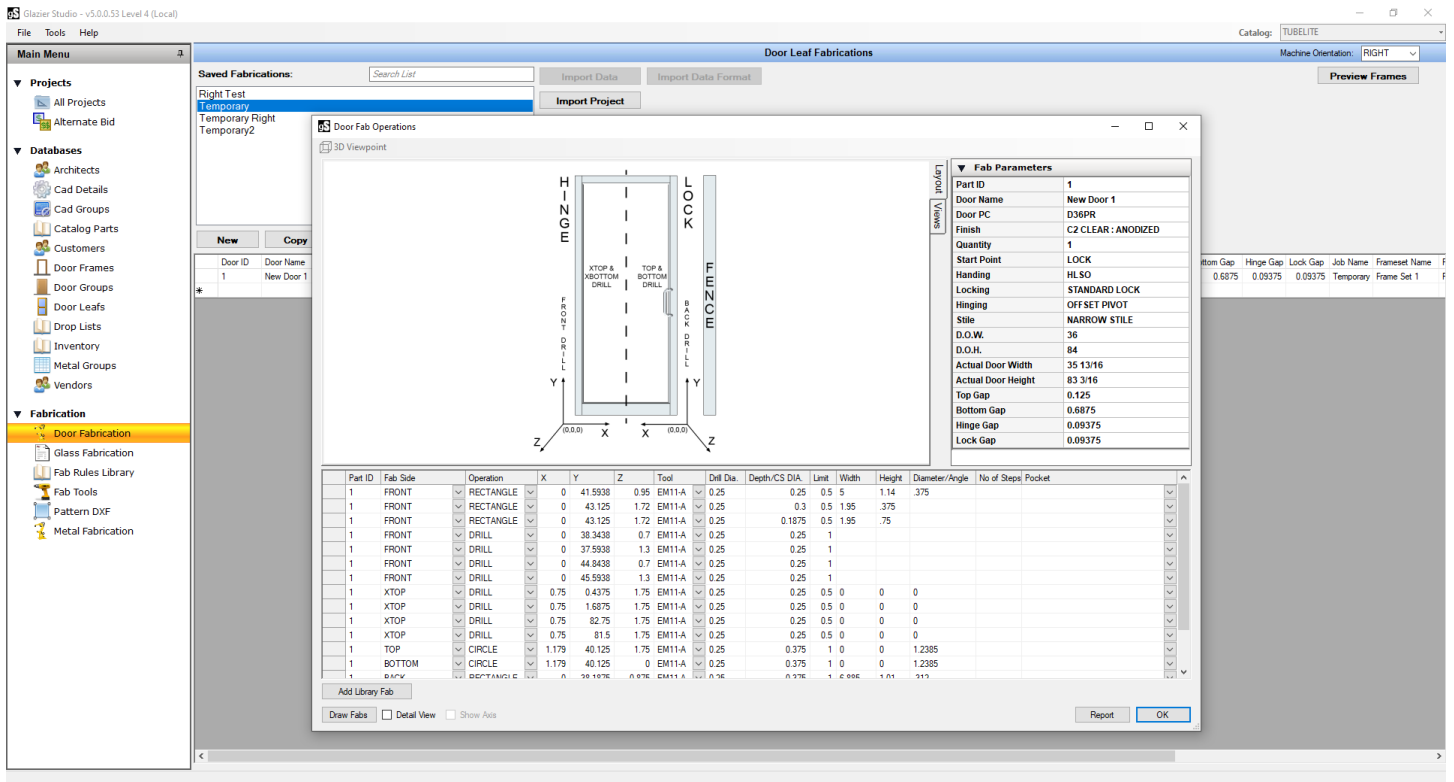
1. Created a new Global Search Tool that will search through all the parts, groups, and projects of the catalog selected for a specific part or filter. There is also the option to replace a part in a group only. All other search boxes will search in the same manner showing you the list containing your search criteria.



How to Use: First start by checking the options you want to search in and then type in the filter box or select a part number from the drop down, then click SEARCH. This will then fill out the information below. To open and view one of the found items, double click that and it will take you to that part, group, or frame. This searches through the database in the name, description, keywords and other fields that may contain you search criteria.

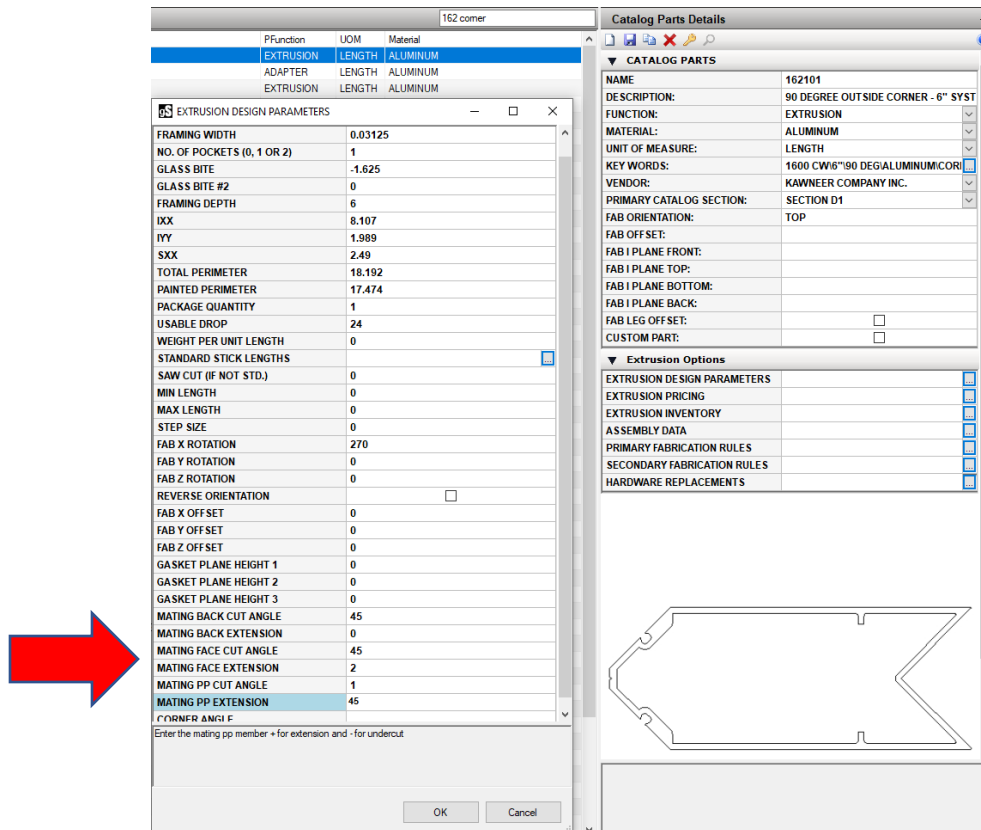
2. Created a Door Leaf Fabrication screen that will feed our new Rhino Door Fab machine.





How to Use: This new feature will take the full door leaf from you project and process the library fabs assigned to the hardware or allow you to manually assign a library fab or place fab operations to be processed through the Rhino. Upon purchase of a Rhino Door Machine, additional training will be provided on this new feature. Contact us today for more details.

3. Added additional part parameters to automatically set the mating member cut angles and extensions when placing this part into an elevation. Select extrusion design parameters when editing an extrusion.



- Added the ability to define a recap status on your recaps. The default is STATUS 1-4 and this list can be modified in the list manager to meet your needs. This was created so that you could create and review your list of recaps per status. An example would be to see all recaps with a status of bidding, won, lost, etc.

Recap Parameters	
Options	
Type of Pricing	List Pricing
Type of Multiplier	CMP
Stock Multiplier	1
Fabricated Multiplier	1
Labor Zone	ZONE 1
Use Default Labor	<input checked="" type="checkbox"/>
Recap Status	STATUS 1

First you can set the status when running the bid recap in the recap parameters section.

The screenshot shows the 'Saved Reports' window in Glazier Studio. The table displays the following data:

Recap Name	Cut Total	S/L Total	Door Total	Glass Total	Vinyl Total	Brake Metal Total	Labor Total	Charges Total	Markup Total	Taxes Tot	Recap Total	Recap Status
Temporary	\$1122.15	\$1507.65	\$2678.50	\$0.00	\$252.00	\$0.00	\$633.76	\$0.00	\$0.00	\$0.00	\$3591.91	STATUS 1
TRAP	\$912.57	\$2008.30	\$826.15	\$0.00	\$356.00	\$0.00	\$349.44	\$0.00	\$0.00	\$0.00	\$3539.89	STATUS 1

The sidebar menu on the left has 'Saved Reports' highlighted. A 'Grand Total' of \$ 8631.80 is shown in the bottom right corner.

Then by going to Saved Reports and select Bid Recaps you will see your list of recaps and it will keep a grand total of what is shown in the bottom right. To filter by status, click on the arrow of the Recap Status header and choose which recaps to filter by. You can also change the status of any recap on this screen. There is also the option to right click on the list to get an export of it. We are also now displaying the totals for category on the screen without opening it.

5. Metal Group Database additional fields

FLIP VERTICALS RIGHT OF DOOR	<input type="checkbox"/>
DEFAULT JAMB SPLICE PC	▼
DEFAULT VERTICAL SPLICE PC	▼

Fabrication options in metal group database.

- Flip Verticals Right of Door – If you want all the verticals to the right of a door to automatically flip the male and female members check this box. This would be used so that two shallow pocket members would not be facing each other.

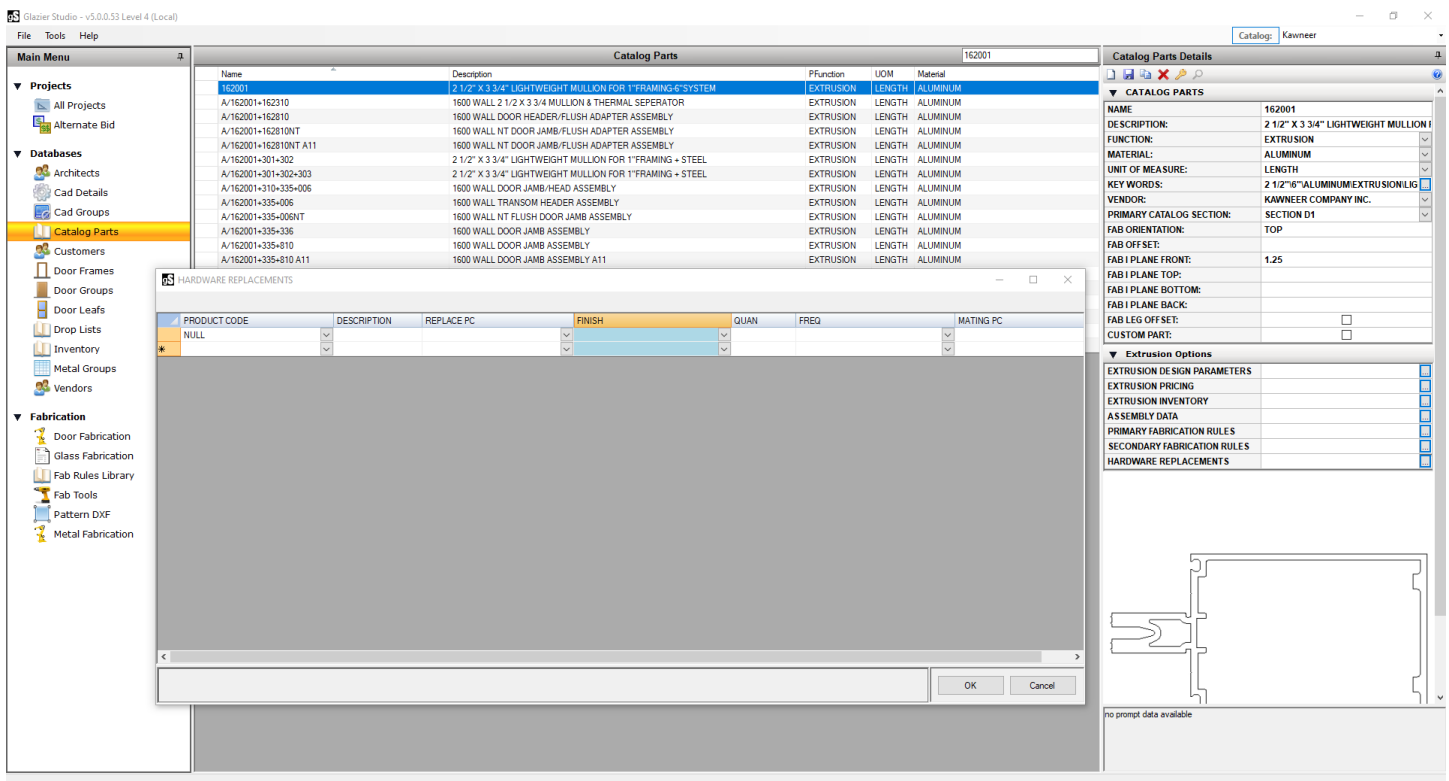
- b. **Default Jamb & Vertical Splice PC** – this will allow you to specify default product codes per this metal system when setting a splice location on an elevation.

RIGHT DOOR JAMB COMPANION	NULL	DEFAULT
END BAY FEMALE HORIZONTAL	NULL	DEFAULT
END BAY MALE HORIZONTAL	NULL	DEFAULT

Additional options in Optional Metal under the metal group database.

- c. **Right Door Jamb Companion** – This will allow the right door jamb companion to be different than the default door jamb companion that is set in the primary metal of the metal group.
- d. **End Bay Horizontal** – this will set a different horizontal member in the very last panel to be different than all the other horizontal set through the frame.
- e. We added additional hardware fields in the hardware section of the metal group.
- f. We added all the additional glass thickness options for vinyl in the vinyl screen of the metal group.

6. Added the ability to set replacement hardware when a part is changed out in the frame.



How to Use: First select an extrusion in catalog parts and then click on Hardware Replacements under extrusion options. This could be used for a special horizontal that requires different screws or shear block. First enter the new product code and then the part it would replace, finish, quantity and frequency that this new part is required. You can also enter additional hardware that may be required without replacing anything.

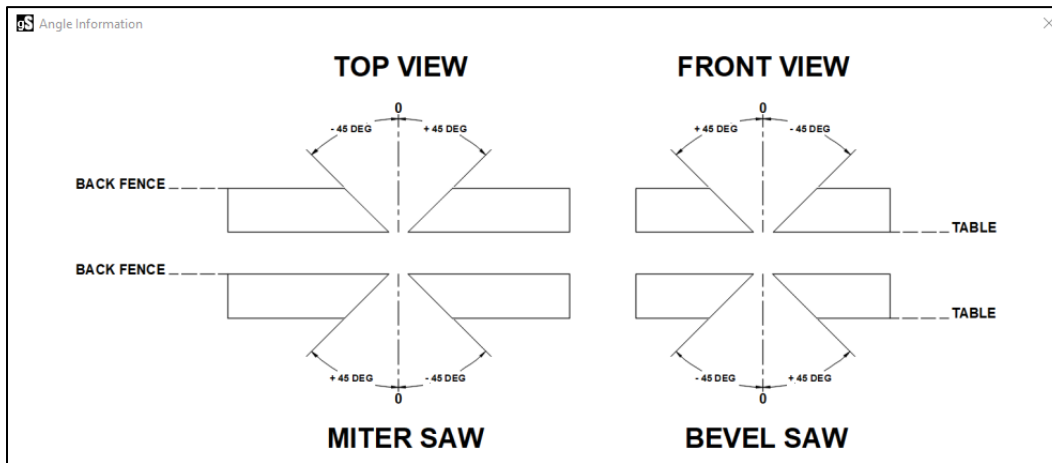
7. Metal Fabrication additions

- a. Added the option to change the machine orientation from the import project screen. This is for those that have multiple Rhino machine that feed from different directions. You will see the machine direction in the top right change as you select an item in the saved list of different directions.
- b. In the metal fab operations screen for each part we added the number of steps and pocketing option that was only available at the Rhino Machine before. The number of steps will process a routing operation in multiple passes based on the number of steps. Pocketing allows you to clean out a rectangular rout either in the width or height direction based on the option you choose.

- c. We added some additional warning colors to help catch some incorrect fab information before being sent to the Rhino. The **ORANGE** will alert you that there are multiple tools being used on the same surface. The **VIOLET** will alert you that a fab operation is not within the part or outside the max of the Rhino parameters or something is set to 0 that requires a value.

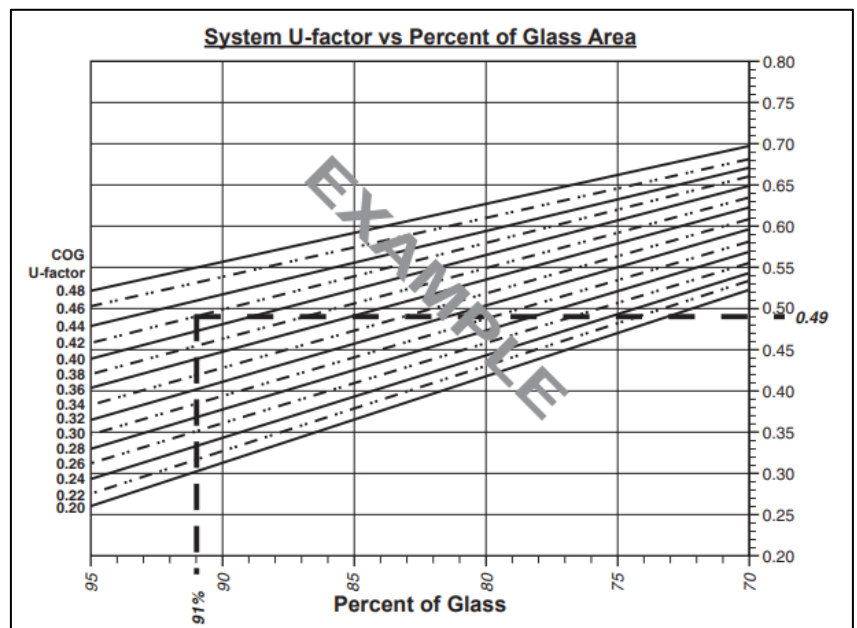
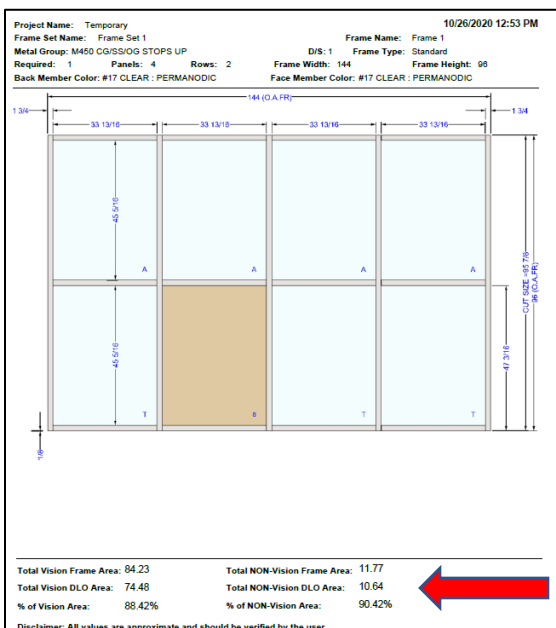


- d. We added a new angle help screen that better explains the angle cuts available for both the Rhino 1100 series or 1350.

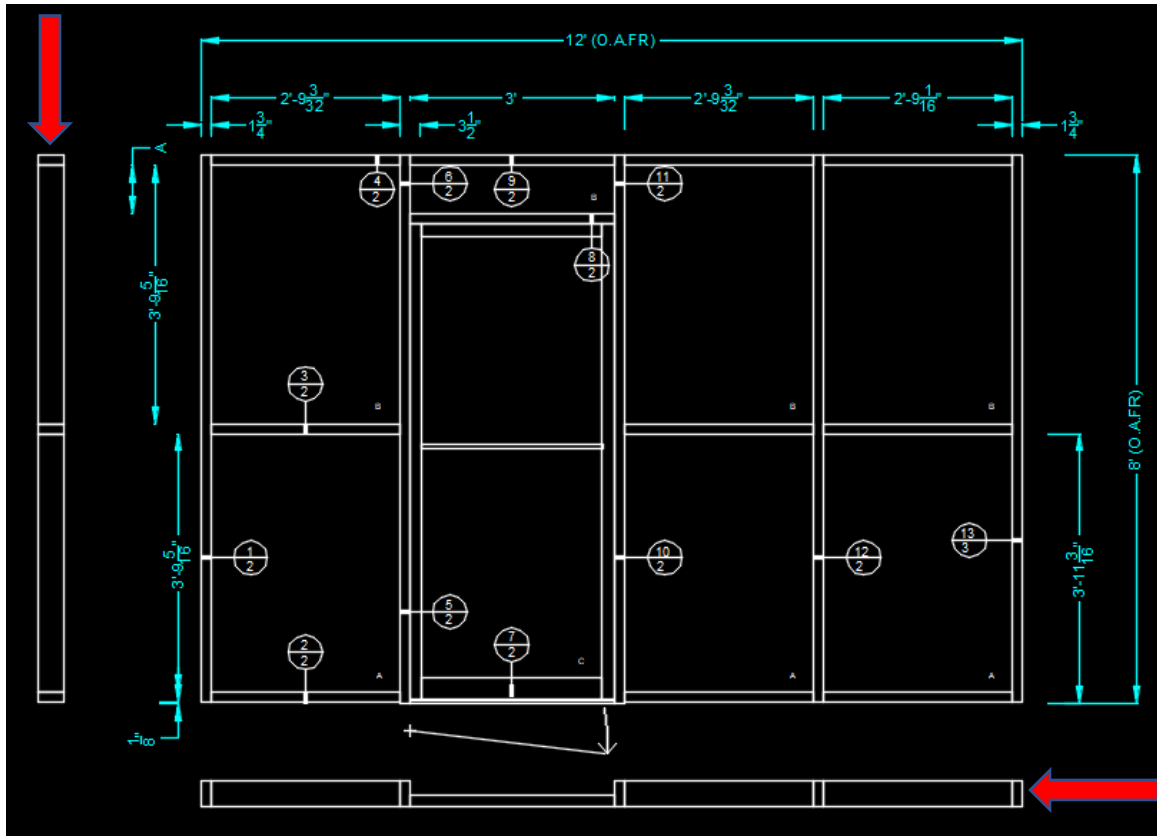


- e. The manual vertical fabrication location report now has all the horizontal locations reporting from the bottom of the stick.

8. Added a Printer Drawing with total area, total DLO and % of glass to assist in the calculation of system U-Factor under the BOM & Drawings section of the program



9. Added a side and bottom plan view next to the elevation when generating a Cad Shop Drawing.



10. During the update process if you have a catalog part that you have marked custom and our update has updated pricing for that part a question will appear asking if you want our updated pricing for all parts or not to update the pricing.