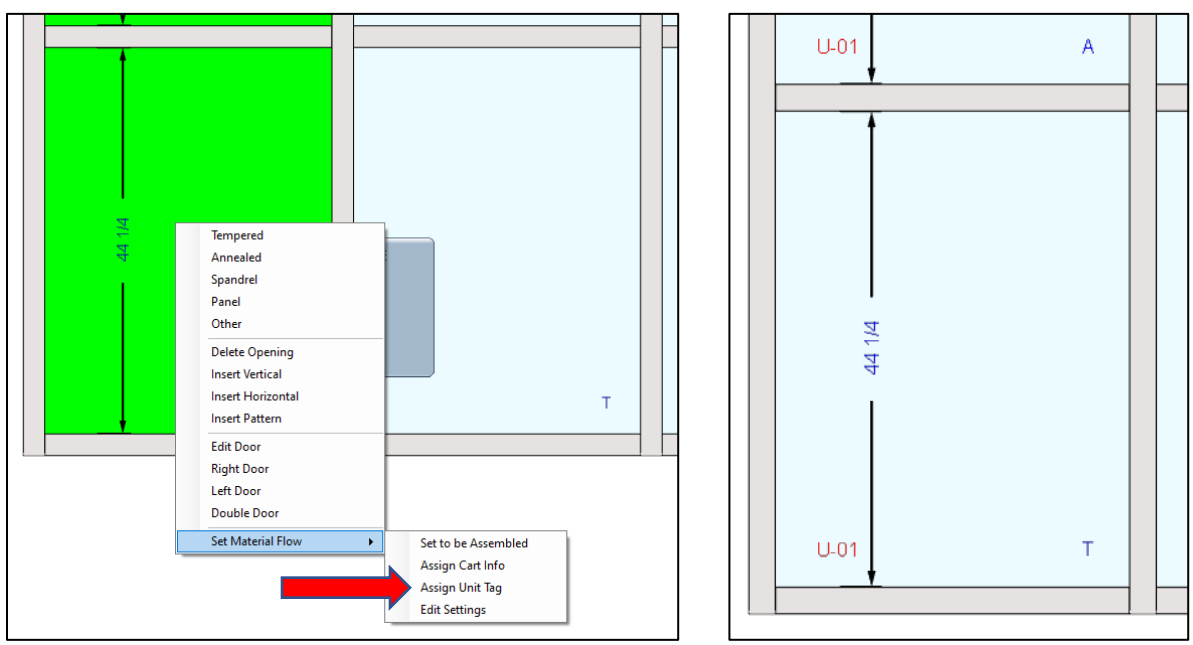


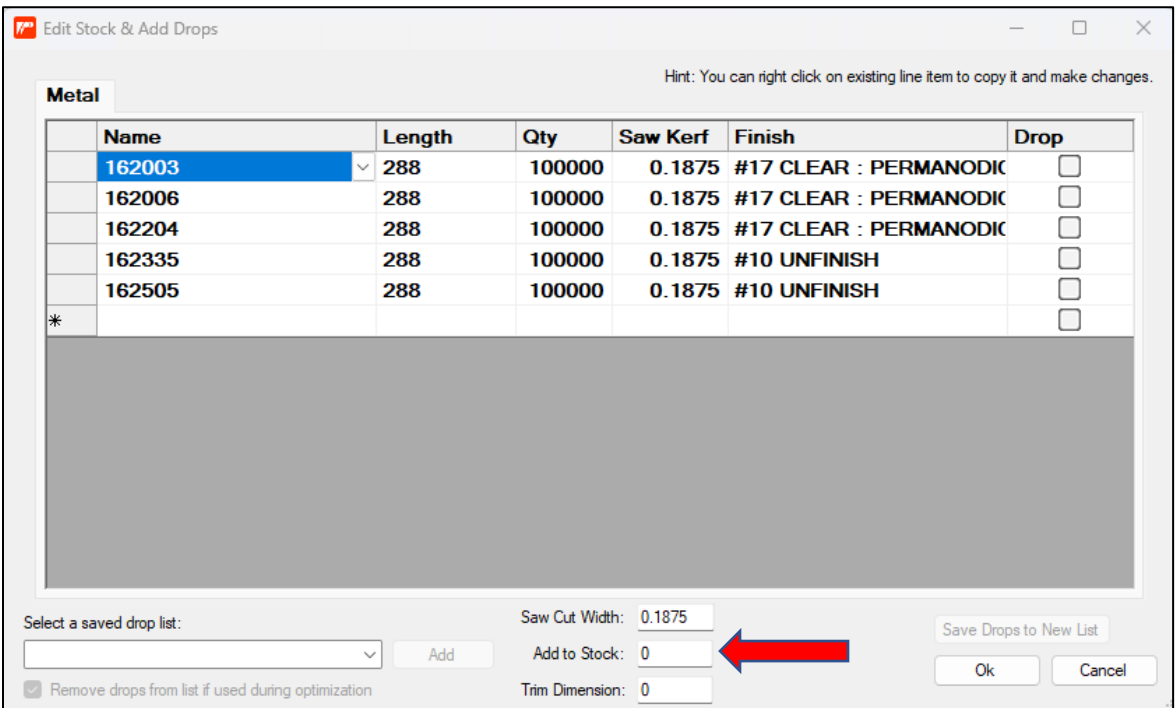
# PartnerPak Studio 5.0.0.124 Update Release Notes

## ➤ New General Program Features

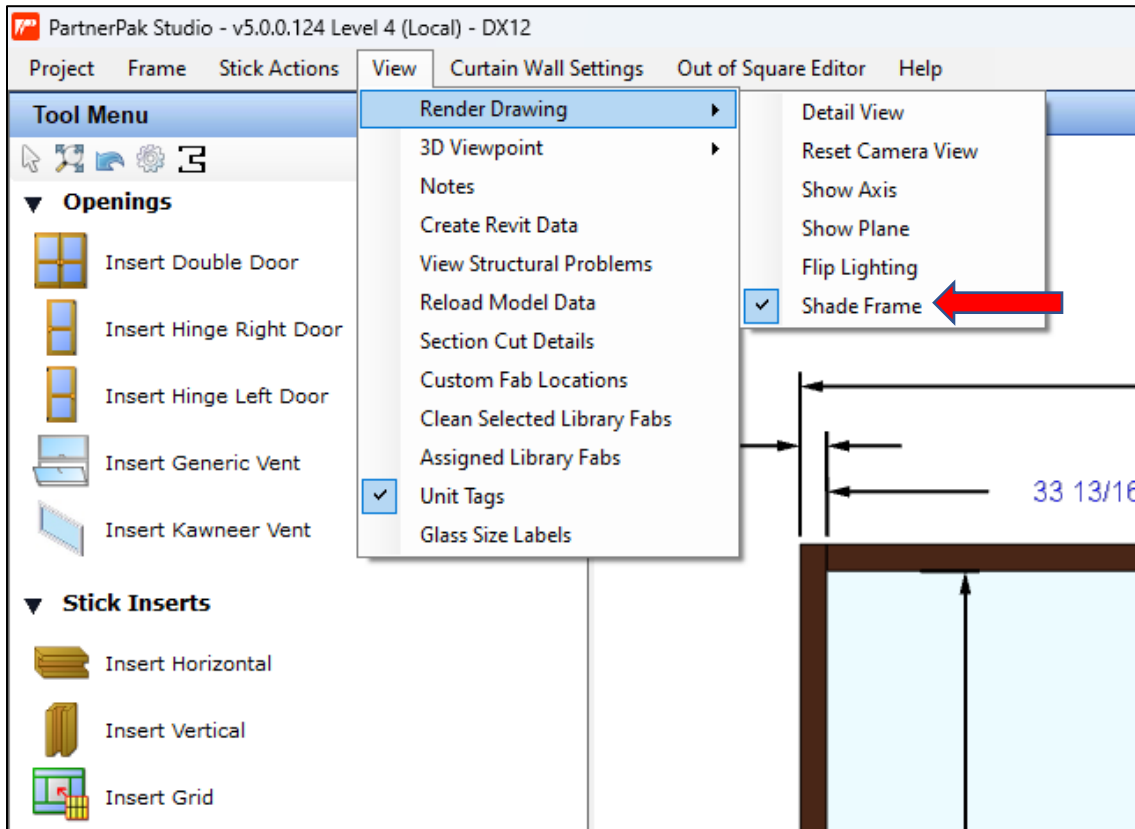
1. Added the option to add Unit tags when building elevations with the option to always display them always or for the metal fabrication elevation drawing only.



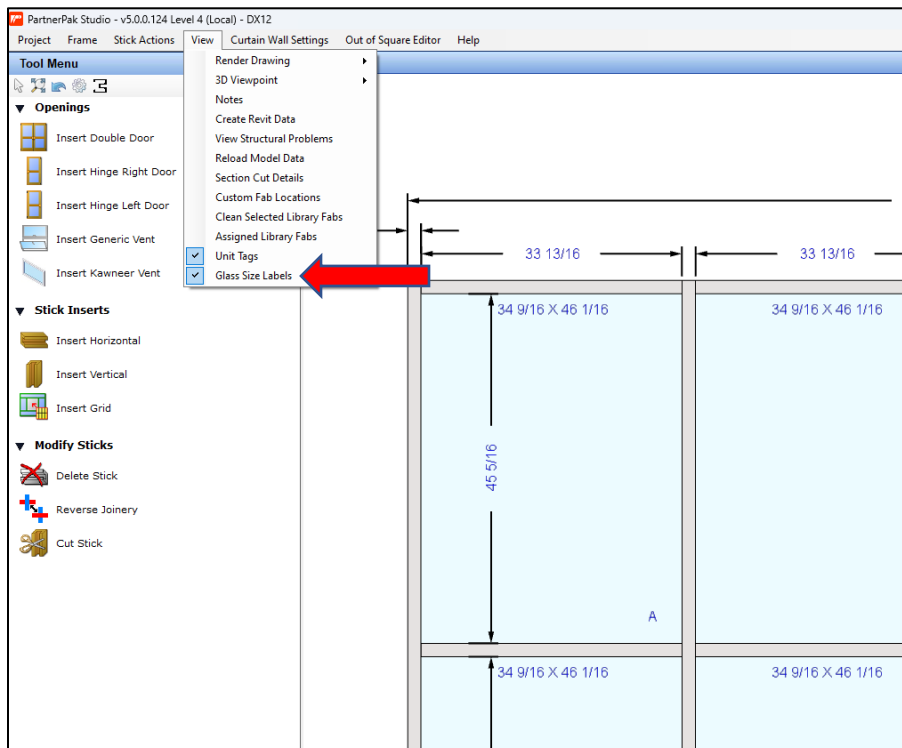
2. Tempering rule adjusted next to door and less than 60".
3. Added the ability to adjust the trim, kerf, add during each optimization when selecting yes to the Edit Stock question during an optimization. This will only change for this run and not your stored settings.



- Ability to delete more than one bid recap at a time under saved reports.
- Added an option to turn off frame shading on dark sticks during the building of elevations. You will be asked if you want to keep this setting for future use. The standard drawing reports will still be shaded.

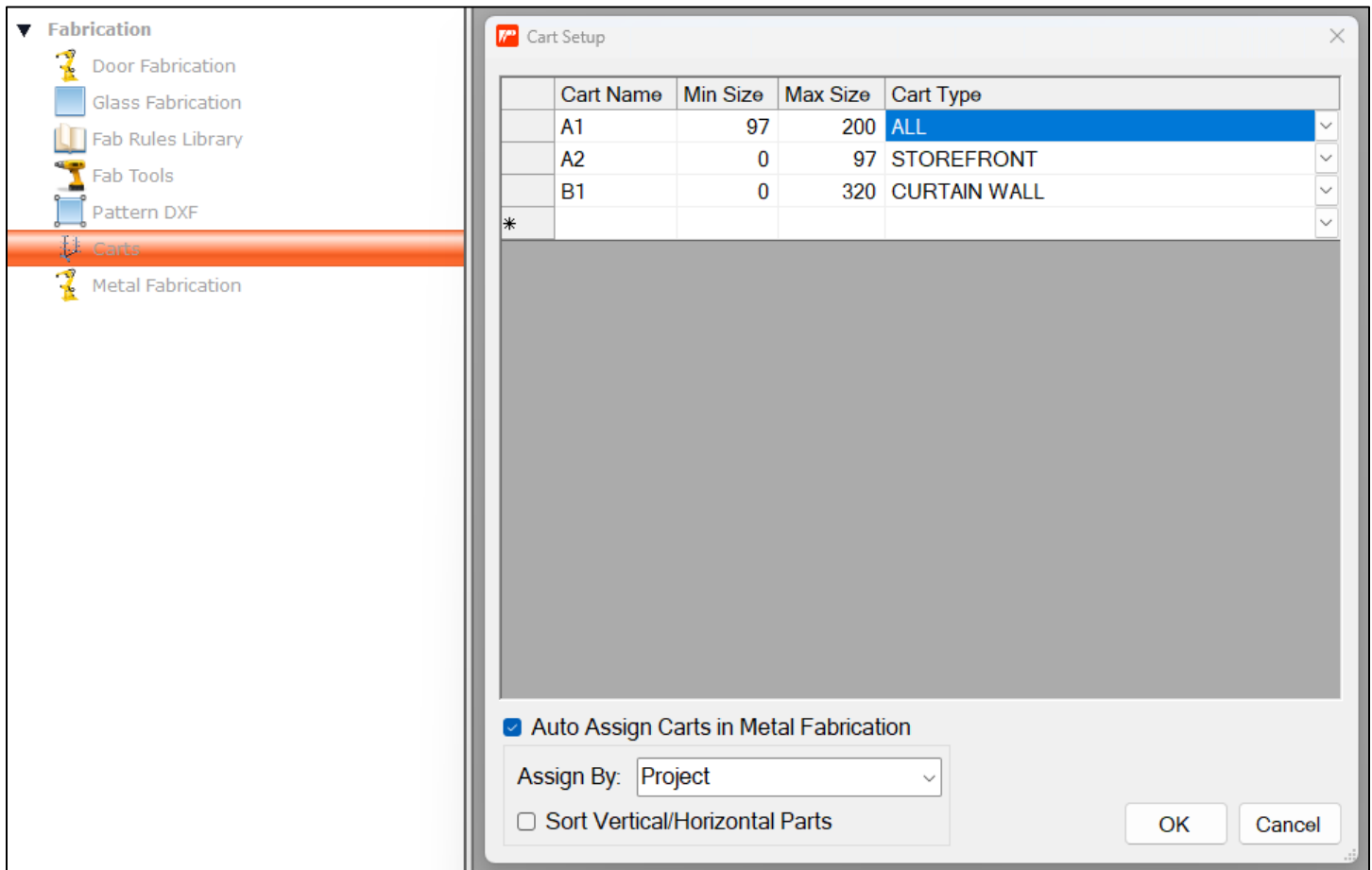


- Added an option to turn on displaying glass sizes on the elevation while building it and to include on shop drawings. You will be asked if you want to keep this setting for future use.

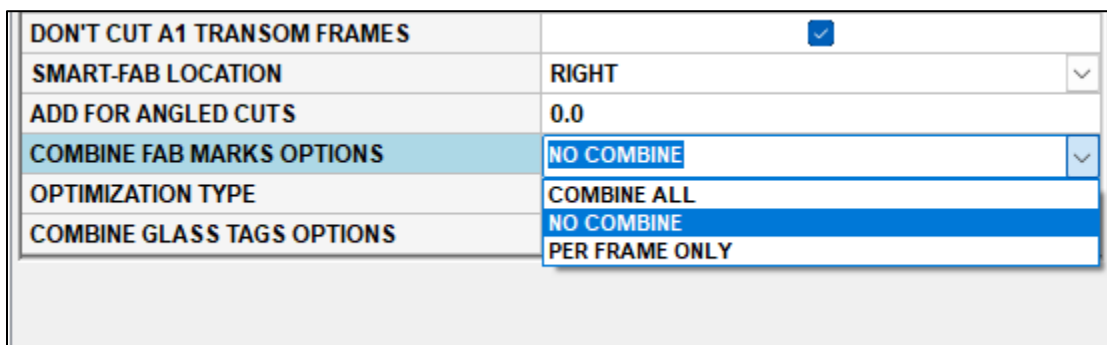


## ➤ New Metal/Door Fabrication Features

1. Added a Carts database to auto assign carts when importing to metal fabrication. You can set up carts based on the type of system or for all systems. You can have the carts assigned by Project, Frame, or Unit.

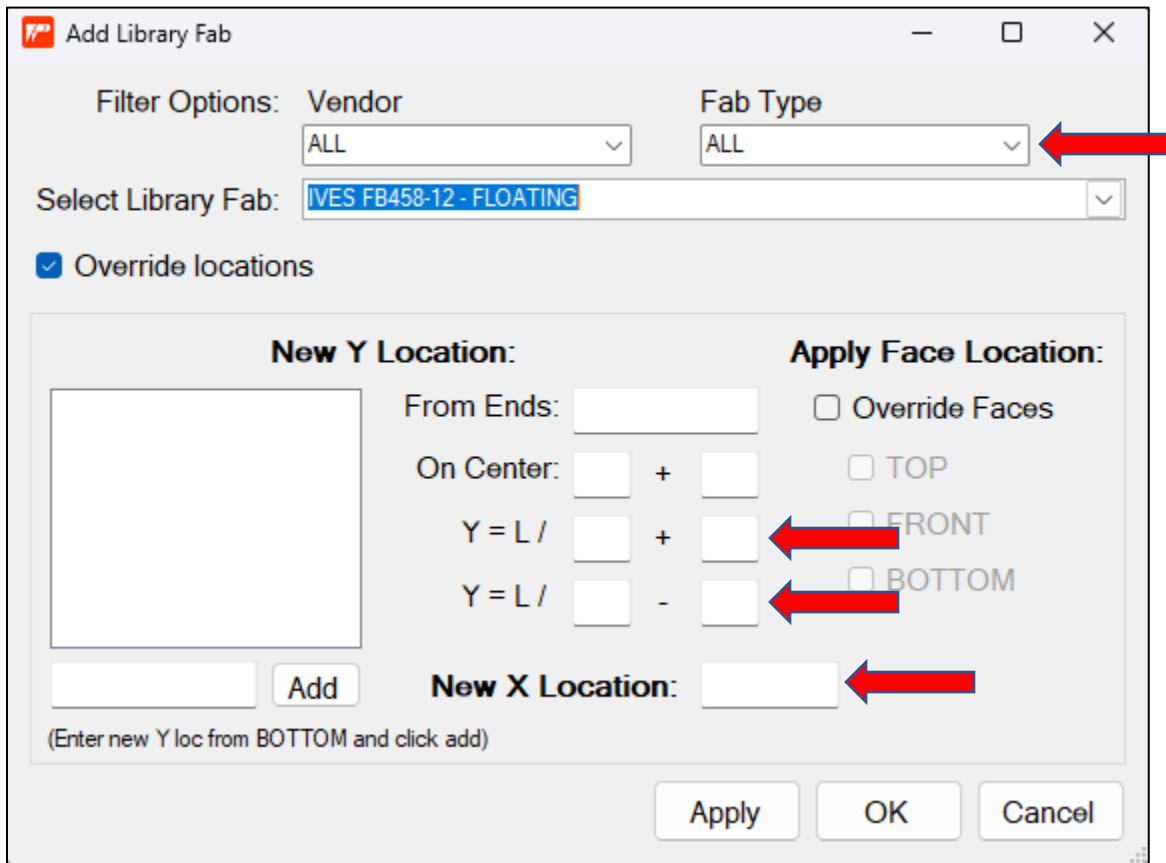


2. Changed the combine fab mark/tag option when running metal and glass fabrication. (No Combine, per Frame only, Combine All) Change these settings under the General Parameters.



3. On the Door and Glass Fabrication screen, the list of jobs is in a grid view with machine direction and date when imported.
4. Added the option to apply fabrication library operations to the threshold too.

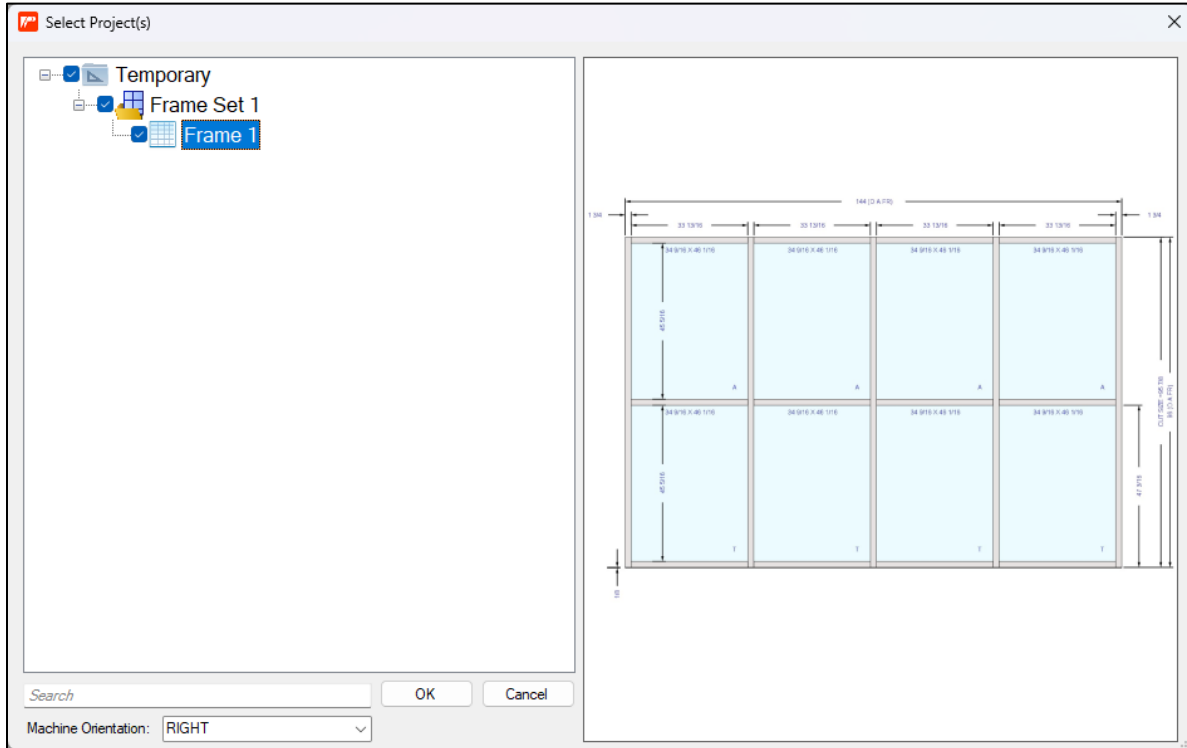
- Added the X Loc Reference dimension to the Add Library Fab screen.
- Added additional formula options on the Add Library Fab screen for OC with a + starting location.



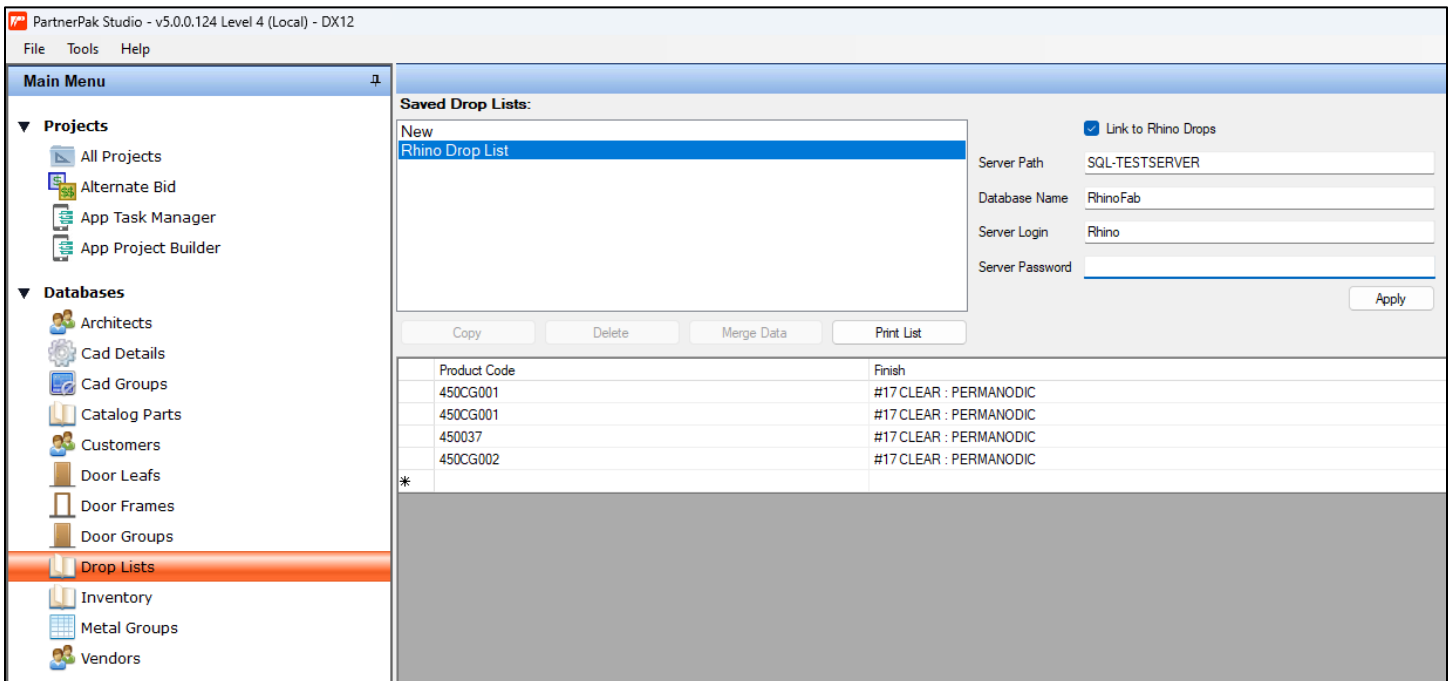
- Added the option to define a vendor and fabrication type to the library fabs screen to better organize the list and then to filter the list when add the Library Fab to a stick or door. Edited the Fab Type list in the list manager under TOOLS | OPTIONS.

Fab Rules Library Details	
FAB RULES LIBRARY	
NAME	VD 994/996L VR910
DESCRIPTION:	VON DUPRIN TRIM W/CYLINDER PAIR DOOR
OPERATIONS	...
USE X LOC REFERENCE	<input type="checkbox"/>
USE Y LOC REFERENCE	<input checked="" type="checkbox"/>
VEDNOR	
FAB TYPE	LOCK

- When you click the import project on the fabrication screens and click on a frame a preview will appear of that frame on the right.



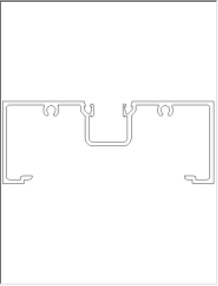
- Rhino Drop link option in the drops database to add the available drops at the Rhino to PartnerPak for review. The RhinoFab machine must be on your internal network. Please contact DeMichele to set up.



10. Add the option to check RhinoFab for the status of a list in metal fabrication that has been imported into the RhinoFab computer. The Rhino Status will display N/A if not found, "LOADED" if found but not processed, and "CUT" if the part has been processed through the Rhino. The RhinoFab machine must be on your internal network. Please contact DeMichele to set up.

**Fabrications**
Machine Orientation: RIGHT

Link to Rhino  
 Server Path:   
 Database Name:   
 Server Login:   
 Server Password:



Back	Job Name	Frameset Name	Frame Name	Function	Panel	Row	Bar Code	Material Flow	Cart Name	Cart Row	Gasket Setup	Group No	Rhino Status
0	Temporary	Frame Set 1	Frame 1	VERTICAL LEFT JAMB	1	1	04731	KD			<input type="button" value="..."/>		N/A
0	Temporary	Frame Set 1	Frame 1	VERTICAL MALE VERTICAL	1	1	04732	KD			<input type="button" value="..."/>		N/A
0	Temporary	Frame Set 1	Frame 1	VERTICAL FEMALE VERTICAL	1	1	04733	KD			<input type="button" value="..."/>		N/A
0	Temporary	Frame Set 1	Frame 1	VERTICAL MALE VERTICAL	2	1	04734	KD			<input type="button" value="..."/>		N/A
0	Temporary	Frame Set 1	Frame 1	VERTICAL FEMALE VERTICAL	2	1	04735	KD			<input type="button" value="..."/>		N/A
0	Temporary	Frame Set 1	Frame 1	VERTICAL MALE VERTICAL	3	1	04736	KD			<input type="button" value="..."/>		N/A
0	Temporary	Frame Set 1	Frame 1	VERTICAL FEMALE VERTICAL	3	1	04737	KD			<input type="button" value="..."/>		N/A
0	Temporary	Frame Set 1	Frame 1	VERTICAL RIGHT JAMB	4	1	04738	KD			<input type="button" value="..."/>		N/A
0	Temporary	Frame Set 1	Frame 1	HORIZONTAL SILL	1	1	04739	KD			<input type="button" value="..."/>		N/A
0	Temporary	Frame Set 1	Frame 1	HORIZONTAL FEMALE HORIZONTAL	1	1	04740	KD			<input type="button" value="..."/>		N/A
0	Temporary	Frame Set 1	Frame 1	HORIZONTAL HEAD	1	2	04741	KD			<input type="button" value="..."/>		N/A
0	Temporary	Frame Set 1	Frame 1	HORIZONTAL SILL	2	1	04742	KD			<input type="button" value="..."/>		N/A
0	Temporary	Frame Set 1	Frame 1	HORIZONTAL FEMALE HORIZONTAL	2	2	04743	KD			<input type="button" value="..."/>		N/A
0	Temporary	Frame Set 1	Frame 1	HORIZONTAL HEAD	2	2	04744	KD			<input type="button" value="..."/>		N/A
0	Temporary	Frame Set 1	Frame 1	HORIZONTAL SILL	3	1	04745	KD			<input type="button" value="..."/>		N/A
0	Temporary	Frame Set 1	Frame 1	HORIZONTAL FEMALE HORIZONTAL	3	1	04746	KD			<input type="button" value="..."/>		N/A
0	Temporary	Frame Set 1	Frame 1	HORIZONTAL HEAD	3	2	04747	KD			<input type="button" value="..."/>		N/A
0	Temporary	Frame Set 1	Frame 1	HORIZONTAL SILL	4	1	04748	KD			<input type="button" value="..."/>		N/A
0	Temporary	Frame Set 1	Frame 1	HORIZONTAL FEMALE HORIZONTAL	4	1	04749	KD			<input type="button" value="..."/>		N/A
0	Temporary	Frame Set 1	Frame 1	HORIZONTAL HEAD	4	2	04750	KD			<input type="button" value="..."/>		N/A
0	Temporary	Frame Set 1	Frame 1	SILL RECEPTORS CHANNEL	0	0	04751	KD			<input type="button" value="..."/>		N/A
0	Temporary	Frame Set 1	Frame 1	SILL OUTSIDE STOP STOP	1	1	04752	KD			<input type="button" value="..."/>		N/A
0	Temporary	Frame Set 1	Frame 1	SILL OUTSIDE STOP STOP	2	1	04753	KD			<input type="button" value="..."/>		N/A
0	Temporary	Frame Set 1	Frame 1	SILL OUTSIDE STOP STOP	3	1	04754	KD			<input type="button" value="..."/>		N/A
0	Temporary	Frame Set 1	Frame 1	SILL OUTSIDE STOP STOP	4	1	04755	KD			<input type="button" value="..."/>		N/A
0	Temporary	Frame Set 1	Frame 1	FEMALE HORIZONTAL OUTSIDE STOP STOP	1	2	04756	KD			<input type="button" value="..."/>		N/A
0	Temporary	Frame Set 1	Frame 1	FEMALE HORIZONTAL OUTSIDE STOP STOP	2	2	04757	KD			<input type="button" value="..."/>		N/A
0	Temporary	Frame Set 1	Frame 1	FEMALE HORIZONTAL OUTSIDE STOP STOP	3	2	04758	KD			<input type="button" value="..."/>		N/A
0	Temporary	Frame Set 1	Frame 1	FEMALE HORIZONTAL OUTSIDE STOP STOP	4	2	04759	KD			<input type="button" value="..."/>		N/A