

## Option 2 Update Instructions

We offer option 2 updates for both PartnerPak Studio and Glazier Studio. Option 2 update will keep all your information and update the program as well. You do have to run these updates in sequential order. Ex. If you are currently running PartnerPak .122 and there is an update for PartnerPak .126, you will have to run .124 update before you can update to .126.

**Option 2 Update** – Use this version if you want to merge changes with your current program. No projects or custom data will be lost in the process

Download the file from the website:

<https://demichelegroup.com/partnerpak-studio-downloads/>

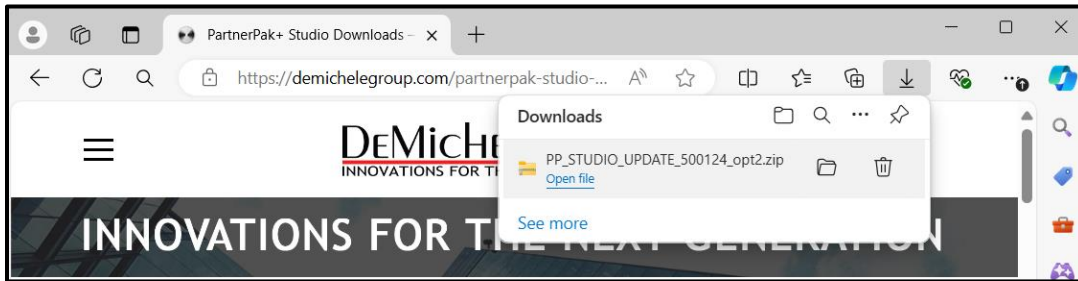
Or

<https://demichelegroup.com/glazier-studio-downloads/>

How do I find the file I just downloaded?

### Microsoft Edge

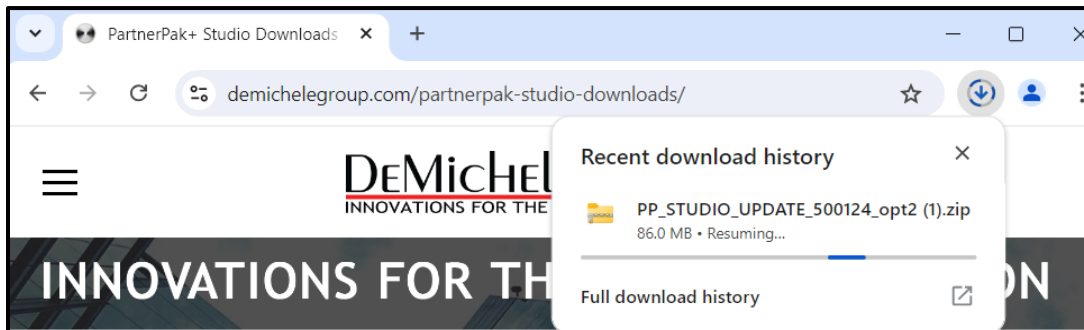
#### i. Download the file



- ii. It will appear at the top right corner, Open folder where file is saved
- iii. Follow unzip instructions below

### Google Chrome

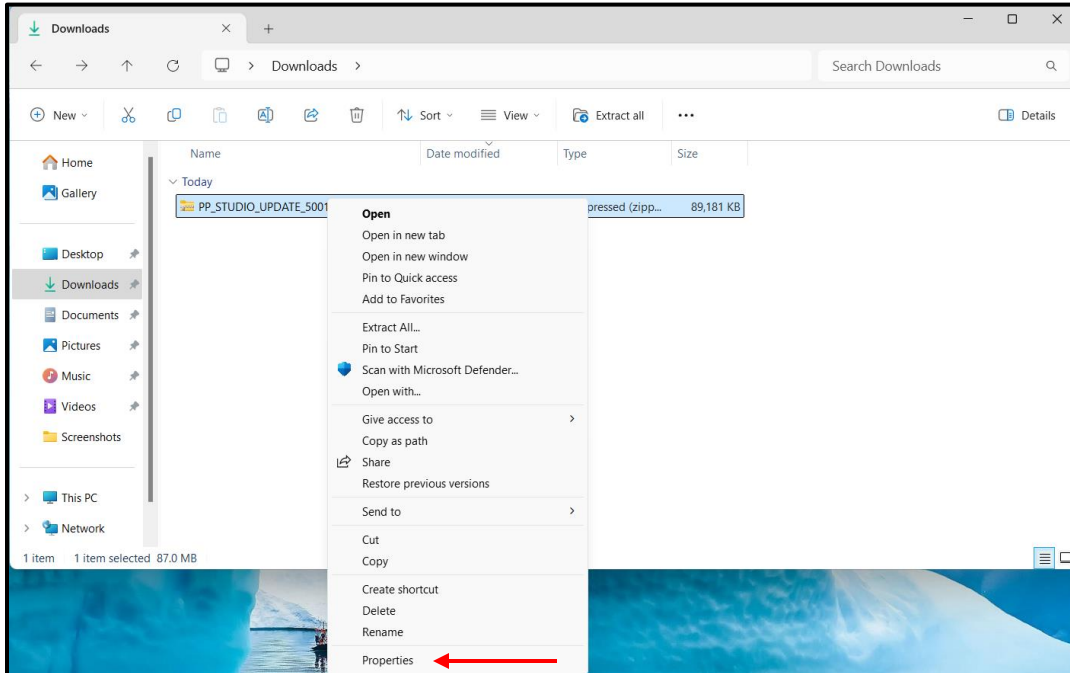
#### i. Download the file



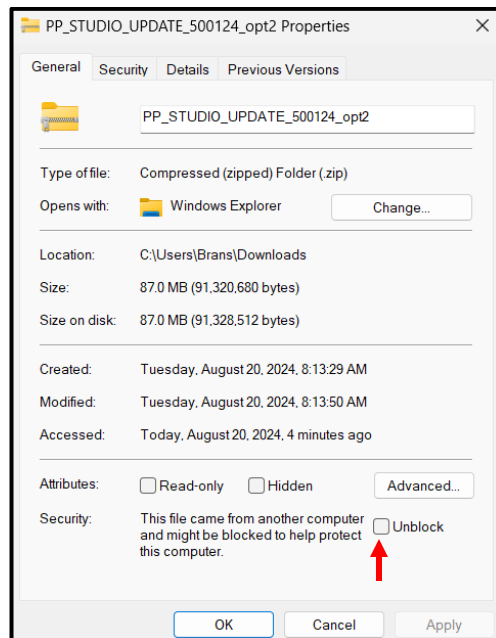
- ii. It will appear at the top right corner, Open folder where file is saved
- iii. Follow unzip instructions below

## 1. Extract All Files

### Windows 11

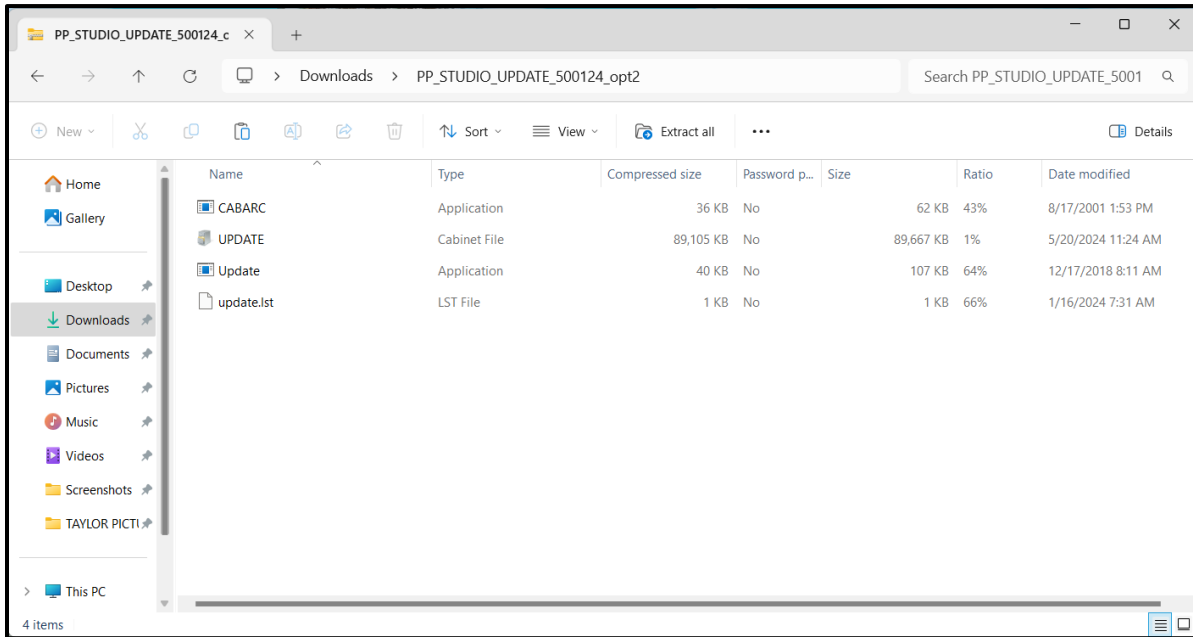


- i. Right click on the zipped update file
- ii. Go to Properties
- iii. Check the Unblock box under General and click ok

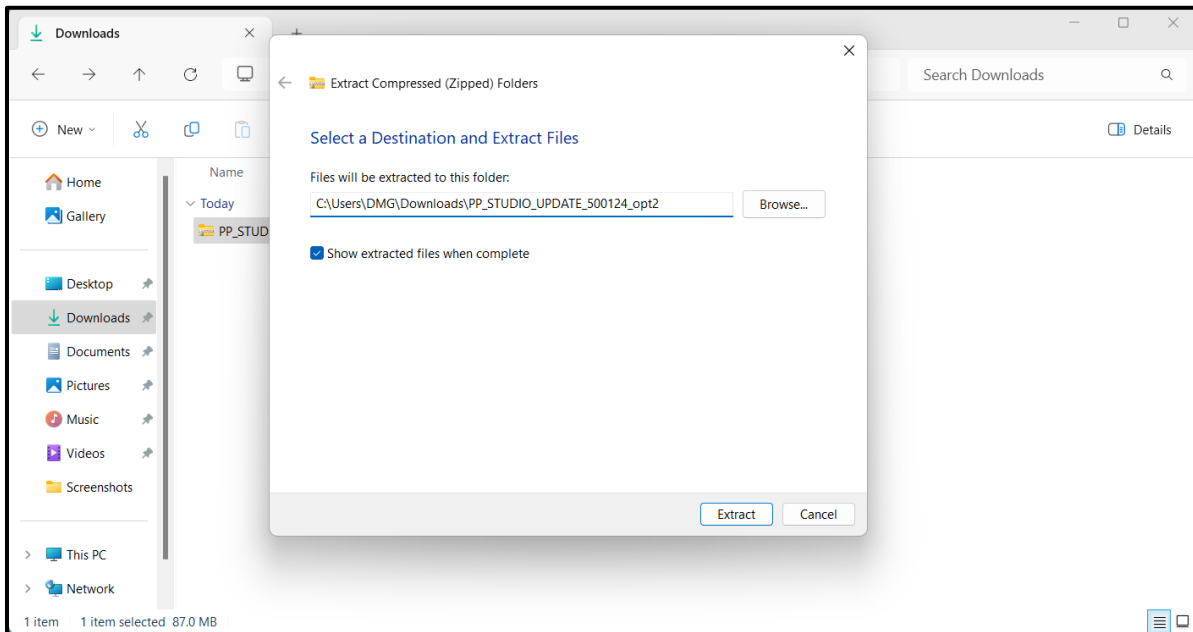


iv. Open zipped file

v. Press Extract All



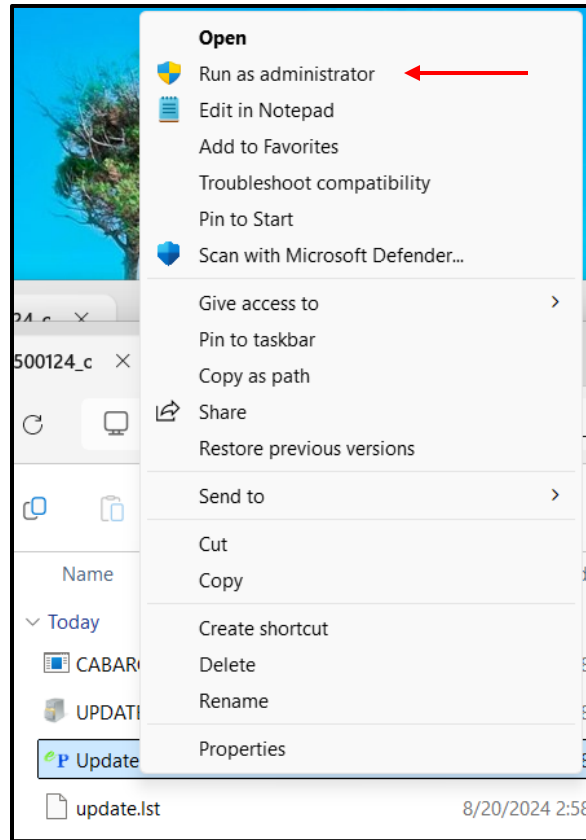
vi. Press Extract



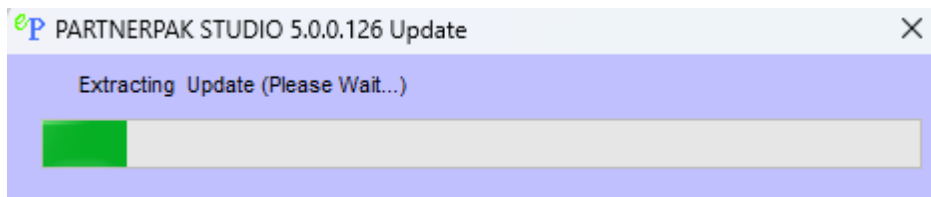
vii. Go to Update.exe with the icon that has a green e and blue P.

CABARC	8/20/2024 2:58 PM	Application	62 KB
UPDATE	8/20/2024 2:58 PM	Cabinet File	89,667 KB
<b>Update</b>	8/20/2024 2:58 PM	Application	107 KB
update.lst	8/20/2024 2:58 PM	LST File	1 KB

viii. Right click and run as administrator

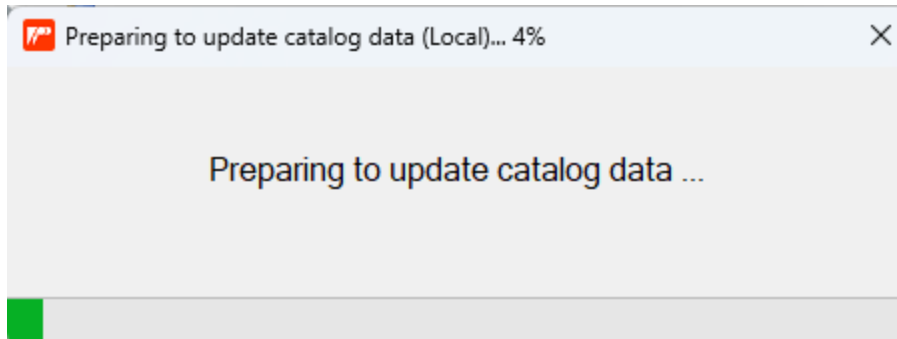


2. Make sure the PartnerPak or Glazier Studio program is closed and click OK to start the update. You should see the Extracting Update window.

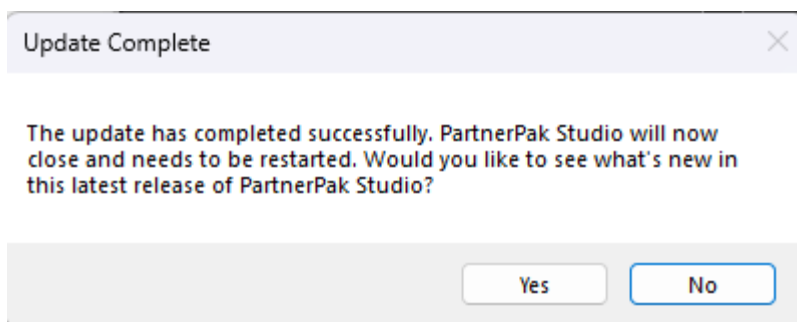


3. Press Ok on the Update has Completed window.
4. Start the program

5. The software will begin merging all its files



6. Press Yes or No and the update will be completed.



7. Start the program and the new version number should be shown at the very top of the program.