



# PartnerPak<sup>+</sup> STUDIO

## Installation Guide

The screenshot displays the PartnerPak+ STUDIO software interface. The main workspace shows a window frame layout with various dimensions and labels. The top horizontal dimension is 200 (O A FR). The total width is 214, with 2 1/4" on each side. The total height is 110 (O A FR), with 1 1/4" on each side. The frame is divided into sections with dimensions: 1 3/4", 36", 1 3/4", 36", and 2 1/4". The vertical dimensions are 81 1/2", 21 1/2", 106 5/8", and 84". The bottom horizontal dimension is labeled A=38 27/32 B=38 13/16. The bottom vertical dimension is 3 1/2 1/4". The software title bar indicates 'PartnerPak Studio - v5.0.0.126 Level 4 (Local) - DX12'. The menu bar includes 'Project', 'Frame', 'Stick Actions', 'View', 'Curtain Wall Settings', 'Out of Square Editor', and 'Help'. The 'Tool Menu' on the left includes 'Openings' (Insert Double Door, Insert Hinge Right Door, Insert Hinge Left Door, Insert Generic Vent, Insert Kawneer Vent) and 'Stick Inserts' (Insert Horizontal, Insert Vertical, Insert Grid). The 'Modify Sticks' section includes 'Delete Stick', 'Reverse Joinery', and 'Cut Stick'. The 'Frame Information' panel on the right shows 'Frame Set 1' parameters: Frame Name (Frame 1), Include RO Dim (checkbox), Panels (5), Rows (2), Number Thus (1), Width (200), Height (110). The 'Metal Group Options' section includes Catalog (KAWNEER), Metal Group (PG 123 S50 1"), Stick Color (#22 BLACK: FLUROPON), and Face Color (#22 BLACK: PERMAIDZE). The 'Sealant Options' section includes Outside Caulking (BUTYL CAULK), Outside Backer Rod (5/8" BACKER ROD), Outside Beads (1), Outside Qty (1), Inside Caulking (BUTYL CAULK), Inside Backer Rod (5/8" BACKER ROD), Inside Beads (1), and Inside Qty (1). The bottom of the panel has a text input field 'Enter the frame height' and tabs for 'Frame Information', 'Stick Levels', 'BOM', 'General Info', and 'Labor'.

**DeMichele Group**  
INNOVATIONS FOR THE NEXT GENERATION

# Table of Contents

Table of Contents .....	2
How to reach DeMichele Group.....	3
Installing PartnerPak Studio .....	4
Starting the PartnerPak Studio Installer .....	4
Installing Direct X Web Components.....	6
Installing PartnerPak Studio.....	8
Troubleshooting/ Enabling .NET Framework 3.5.....	11

---

# How to reach DeMichele Group

**Our business hours are:**

Monday through Friday

7:00am to 4:00pm AST

**Call us for these different types of calls:**

Questions, Suggestions or Software installation

Customer Support/ Training Information

480-985-4926

Fax

480-985-3000

**Email us:**

General Information

info@demichelegroup.com

Chris Draper

chris@demichelegroup.com

John Blasko

jblasko@demichelegroup.com

Branson DeWitt

branson@demichelegroup.com

Scott Yost

scott@demichelegroup.com

Matt Myers

matt@demichelegroup.com

Taylor Baldwin

taylor@demichelegroup.com

Jerry Renteria

jerry@demichelegroup.com

**Website:**

General

[www.demichelegroup.com](http://www.demichelegroup.com)

PartnerPak

<https://demichelegroup.com/partnerpak-studio-downloads/>**UPS Deliveries:**

Demichele Group

2110 S. Douglas Dr.

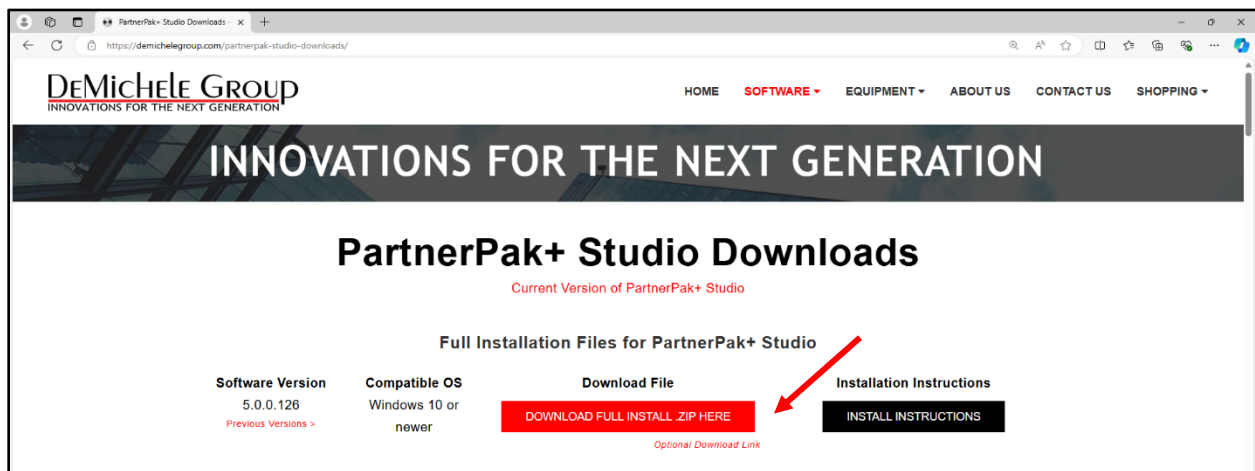
Chandler, AZ 85286

# Installing PartnerPak Studio

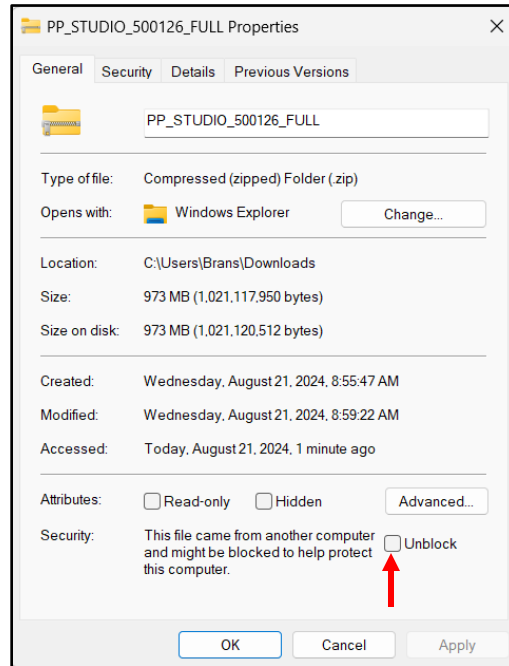
## Starting the PartnerPak Studio Installer

Download the Full Installation from the DeMichele Website at

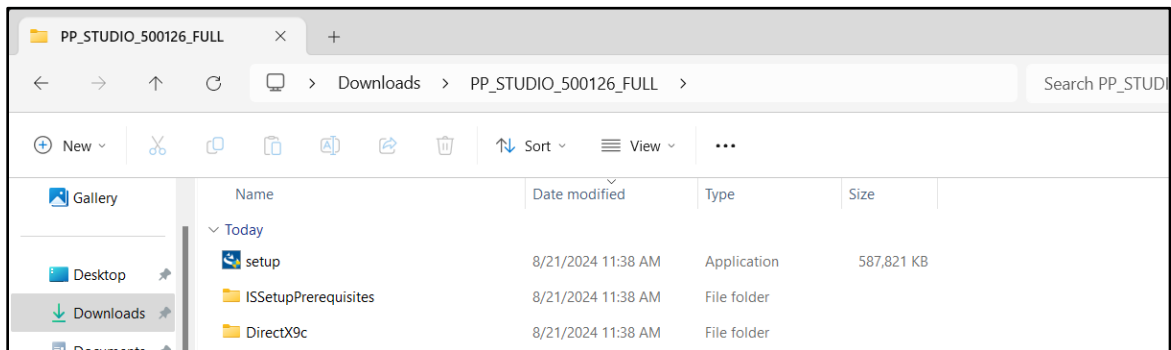
<https://demichelegroup.com/partnerpak-studio-downloads/>



1. Select the DOWNLOAD FULL INSTALL .ZIP HERE.
2. Once Downloaded, Right click on the Zipped file and go to Properties.
3. In Properties, under General make sure to check the unblock box and apply then click ok.



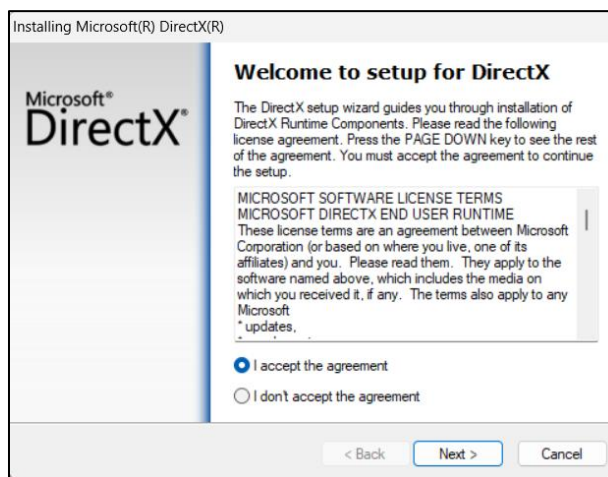
4. Open the folder where the file is downloaded and Extract the files.
5. Once Extracted, right click on the setup and run it as an Administrator



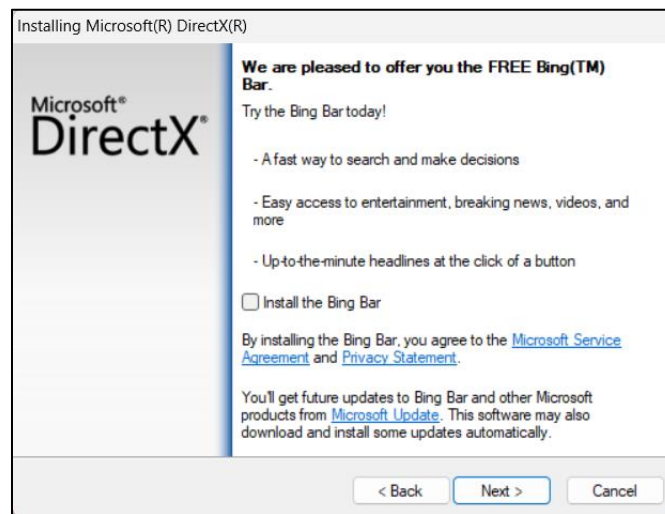
6. Follow the prompts through the install process
7. First SQL Express will install automatically (if it errors contact Demichele Group Support)

## Installing Direct X Web Components

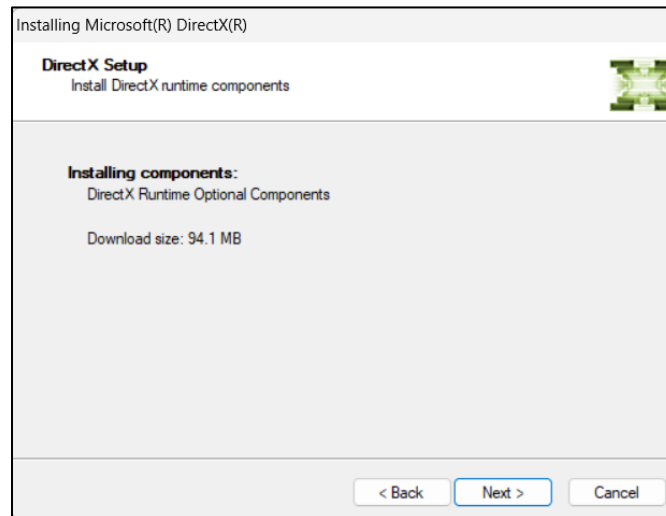
The PartnerPak Studio program requires several Microsoft components to be installed before it installs the Glazier Studio application. Direct X Web is the core of the new graphics capability and must be installed first. You are not required to install the Bing toolbar, so this guide will show you how to deselect it and when.



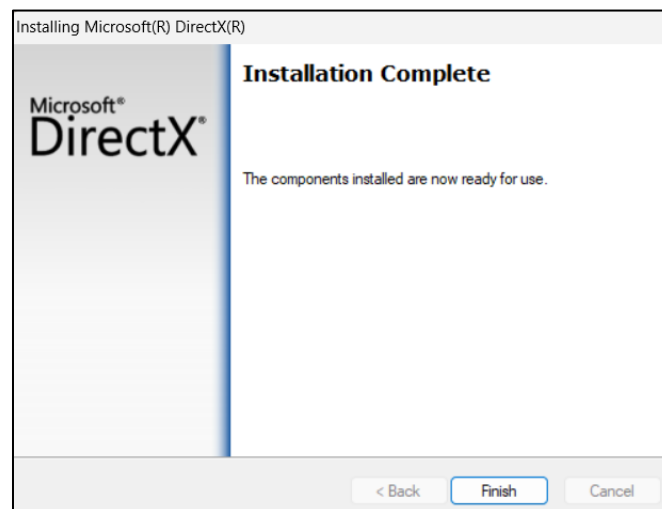
Step 8: Accept the user license agreement by checking the box and press the Next button to continue. NOTE: You must have internet connection to continue as this will install the latest Microsoft Direct X Updates



Step 9: Uncheck the Bing Toolbar and press the Next button to continue.



Step 10: Press the Next button to continue.

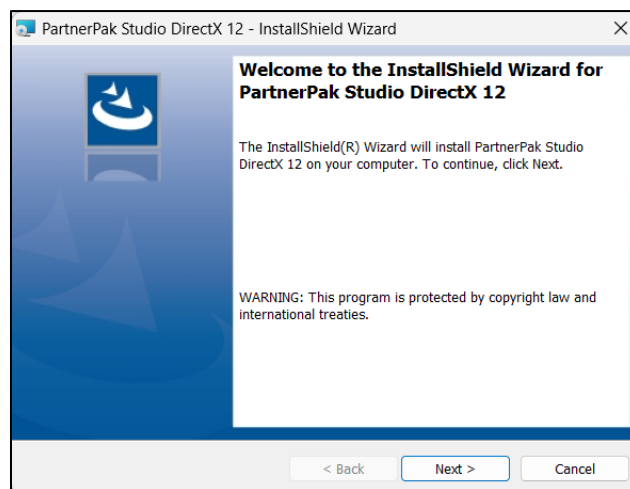


Step 11: Press the Finish button to complete Direct X Web setup.

NOTE: You might need to restart the system after this installation depending on your video card. The computer will prompt you to do so if it's necessary and the software will continue installing once restarted. Otherwise go to step 12 to install PartnerPak Studio.

## Installing PartnerPak Studio

The PartnerPak Studio program will now be installed and may add additional Direct X Web components during the installation. You can change the default directory to place the program installation on a different drive; however, it will be your responsibility to make sure that you can read, write and change files in the location you are specifying. Ask your IT staff or contact the DeMichele Group if you are unsure of how to check for this.



Step 10: Press the Next button to begin the PartnerPak Studio Install.



Step 11: Accept the user license agreement by clicking the radial button and press the Next button to continue.



PartnerPak Studio DirectX 12 - InstallShield Wizard

**Customer Information**

Please enter your information.

User Name:  
DMGuser123@gmail.com

Organization:

InstallShield

< Back Next > Cancel

Step 12: Set User Name and Company Name, then press the Next button to continue.

PartnerPak Studio DirectX 12 - InstallShield Wizard

**Destination Folder**

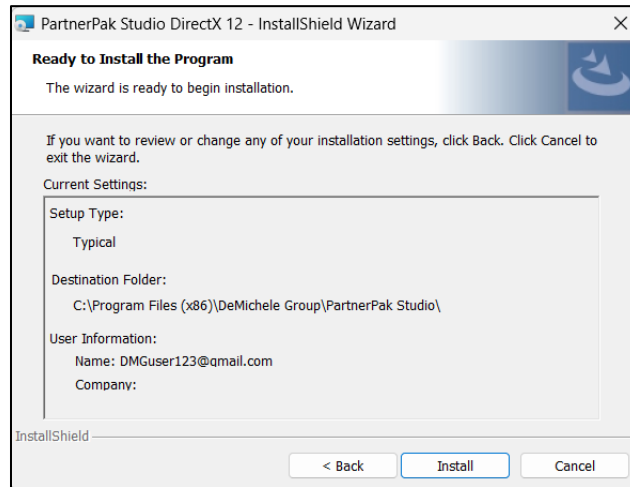
Click Next to install to this folder, or click Change to install to a different folder.

Install PartnerPak Studio DirectX 12 to:  
C:\Program Files (x86)\DeMichele Group\PartnerPak Studio\ Change...

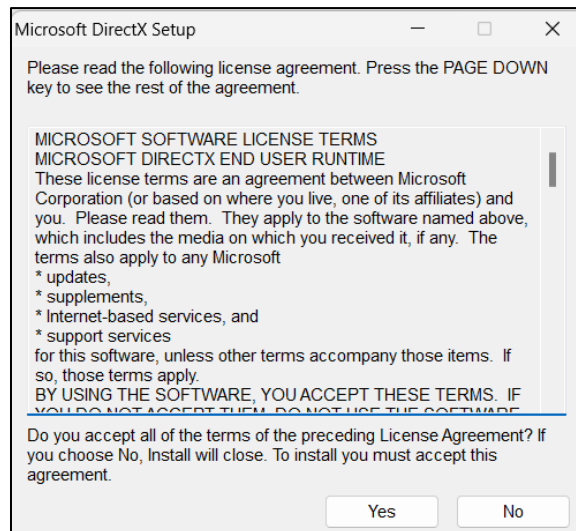
InstallShield

< Back Next > Cancel

Step 13: Either keep the default installation directory, or press change and direct the program to a new location for installation and press the Next button to continue.

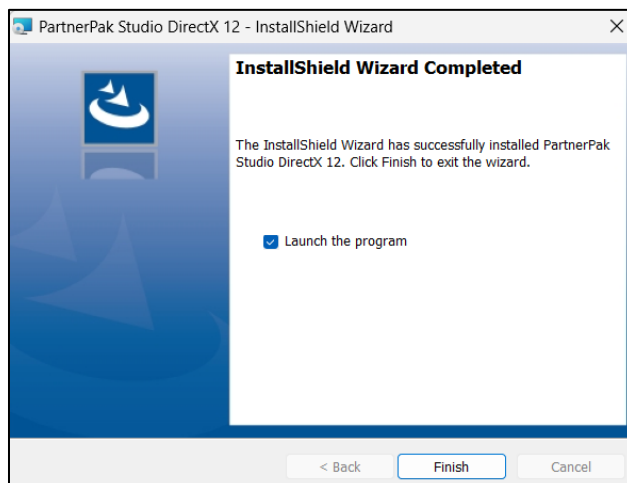


Step 14: Press the Install button to continue



Step 15: Press the Yes button to continue.

NOTE: You must have internet connection to continue as this will install the latest Microsoft Direct X Updates.



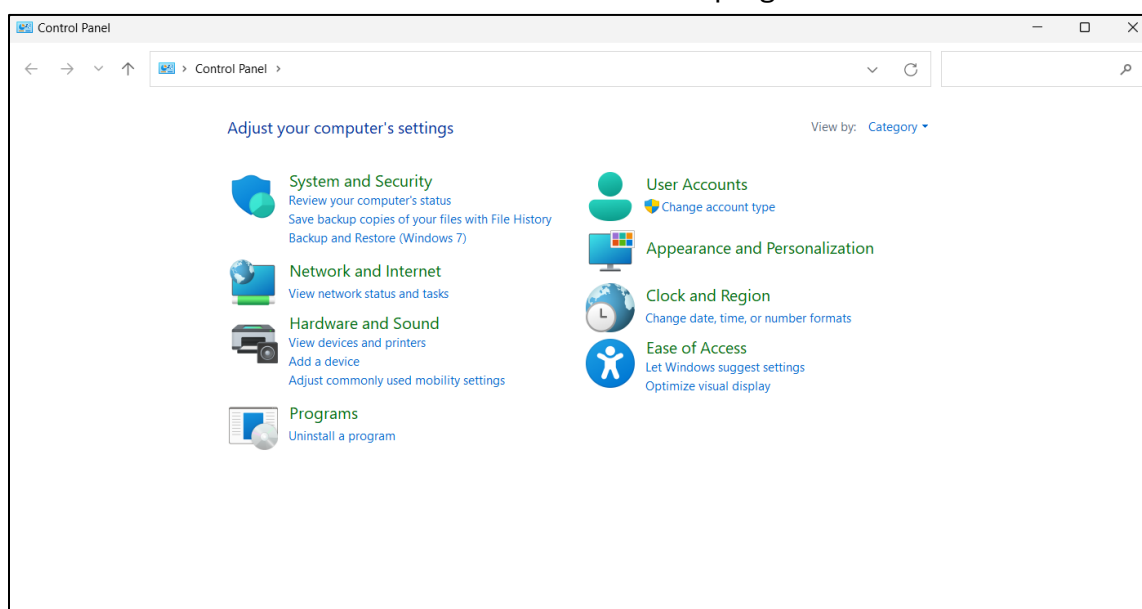
Step 16: Press the Finish button to complete the installation.

NOTE: The program will automatically launch, and the user will either be asked for a Product registration requiring the Customer number, Company Name, and the users first and last name; or the program will ask for a fatal error code. If the user does not know please contact the DeMichele Group at (480) 985-4926.

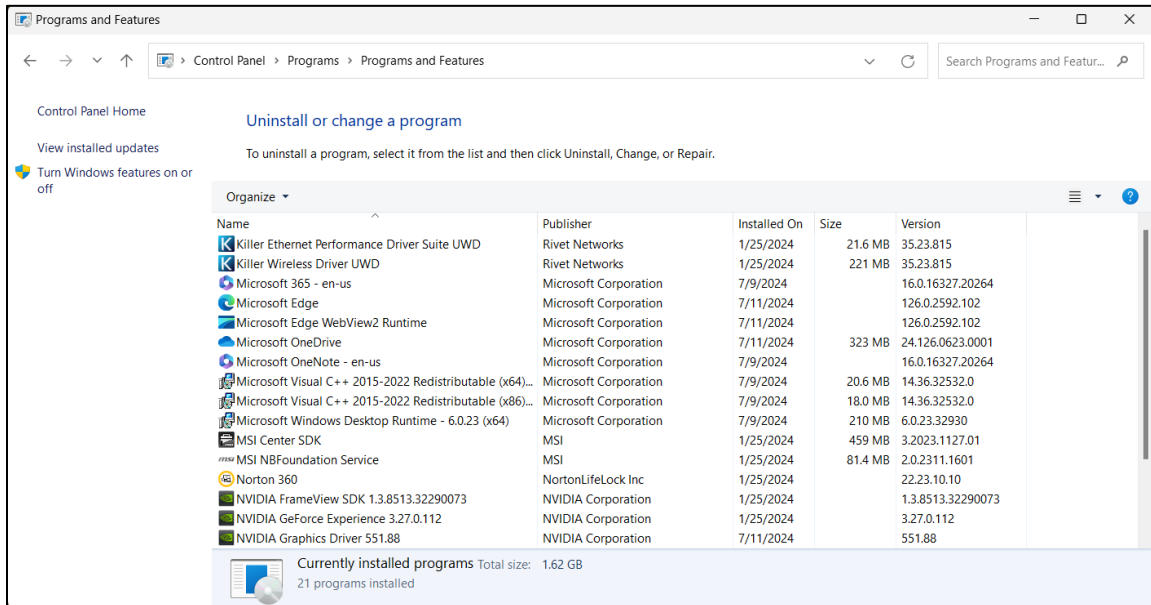
## Troubleshooting/ Enabling .NET Framework 3.5

If the program installation fails due to .NET Framework not being installed here are the steps to get this installed.

Go to the Control Panel and select Uninstall a program in the bottom left.

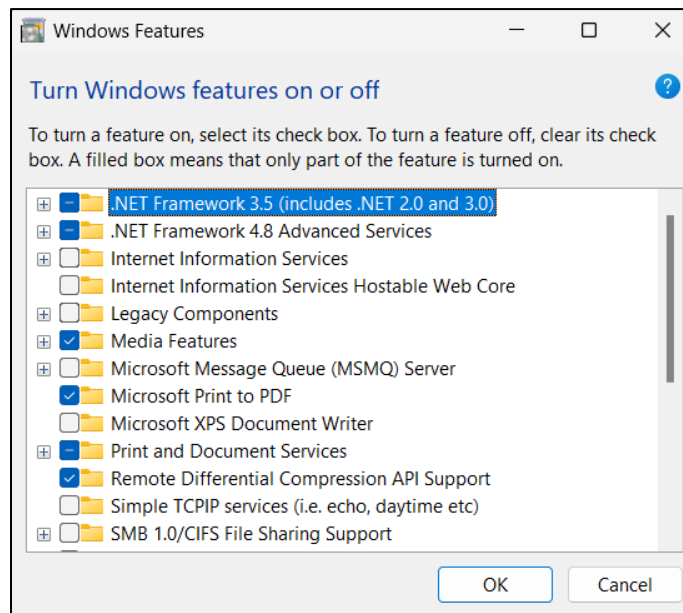


In the left bar, select the turn Windows features On or Off

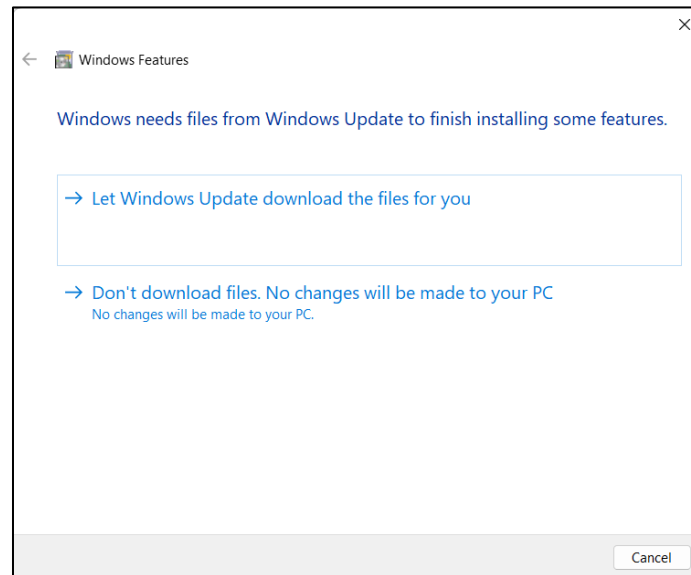


Select the box in front of the .NET Framework 3.5 (includes .NET 2.0 and 3.0)

And press OK to install.



Select the downloaded files from Windows Update (requires internet access)



Press the Close button to complete the .NET 3.5 Installation

